



ELECTRONIC COPY

LABORATORY GROWN DIAMOND REPORT

January 17, 2026
IGI Report Number LG762541317
Description LABORATORY GROWN DIAMOND
Shape and Cutting Style CUT CORNERED RECTANGULAR MODIFIED BRILLIANT
Measurements 8.24 X 5.65 X 3.99 MM

GRADING RESULTS

Carat Weight 1.55 CARAT
Color Grade E
Clarity Grade VS 1

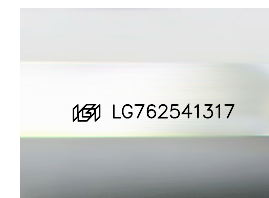
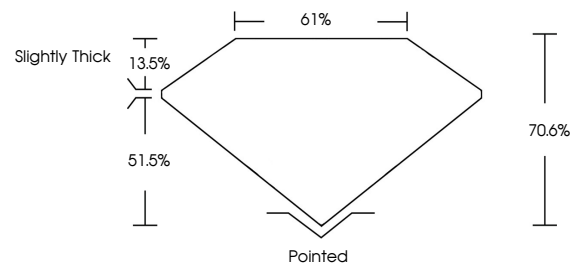
ADDITIONAL GRADING INFORMATION

Polish EXCELLENT
Symmetry VERY GOOD
Fluorescence NONE

Inscription(s) LG762541317

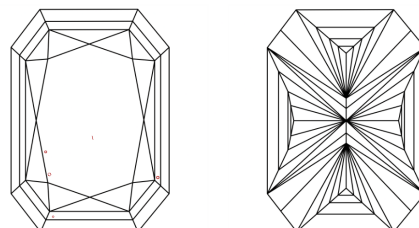
Comments: This Laboratory Grown Diamond was created by Chemical Vapor Deposition (CVD) growth process.
Type IIa

PROPORTIONS



Sample Image Used

CLARITY CHARACTERISTICS



KEY TO SYMBOLS

Red symbols indicate internal characteristics.
Green symbols indicate external characteristics.

COLOR

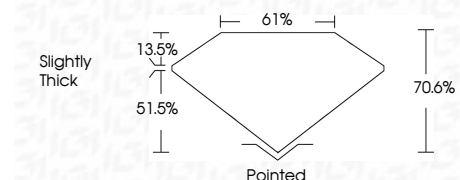
D E F G H I J Faint Very Light Light

CLARITY

FL IF VS¹⁻² VS¹⁻² SI¹⁻² I¹⁻³
Flawless Internally Flawless Very Very Slightly Very Slightly Included Included



January 17, 2026
IGI Report Number LG762541317
Description LABORATORY GROWN DIAMOND
Shape and Cutting Style CUT CORNERED RECTANGULAR MODIFIED BRILLIANT
Measurements 8.24 X 5.65 X 3.99 MM
GRADING RESULTS
Carat Weight 1.55 CARAT
Color Grade E
Clarity Grade VS 1



ADDITIONAL GRADING INFORMATION

Polish EXCELLENT
Symmetry VERY GOOD
Fluorescence NONE
Inscription(s) LG762541317
Comments: This Laboratory Grown Diamond was created by Chemical Vapor Deposition (CVD) growth process.
Type IIa



IGI



January 17, 2026
IGI Report No LG762541317
CUT CORNERED RECT. MODIFIED BRILLIANT
8.24 X 5.65 X 3.99 MM
Carat Weight 1.55 CARAT
Color Grade E
Clarity Grade VS 1
Depth 70.6%
Table 61%
Girdle Slightly Thick
Culet Pointed
Polish EXCELLENT
Symmetry VERY GOOD
Fluorescence NONE
Inscription(s) LG762541317
Comments: This Laboratory Grown Diamond was created by Chemical Vapor Deposition (CVD) growth process.
Type IIa