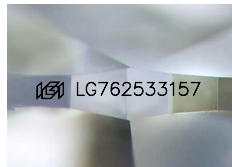




December 31, 2025  
**IGI Report Number** LG762533157  
**OVAL BRILLIANT**  
**LABORATORY GROWN DIAMOND**  
**7.75 X 5.66 X 3.50 MM**  
 Carat Weight **0.97 CARAT**  
 Color Grade **E**  
 Clarity Grade **VVS 2**  
 Polish **EXCELLENT**  
 Symmetry **EXCELLENT**  
 Fluorescence **NONE**  
 Inscription(s) **IGI LG762533157**

**LABORATORY GROWN DIAMOND REPORT**

December 31, 2025  
 IGI Report Number **LG762533157**  
 Description **LABORATORY GROWN DIAMOND**  
 Shape and Cutting Style **OVAL BRILLIANT**  
 Measurements **7.75 X 5.66 X 3.50 MM**



Sample Image Used

Comments: This Laboratory Grown Diamond was created by Chemical Vapor Deposition (CVD) growth process. Type IIa

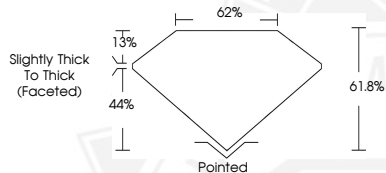
**GRADING RESULTS**

Carat Weight **0.97 CARAT**  
 Color Grade **E**  
 Clarity Grade **VVS 2**

**ADDITIONAL GRADING INFORMATION**

Polish **EXCELLENT**  
 Symmetry **EXCELLENT**  
 Fluorescence **NONE**  
 Inscription(s) **IGI LG762533157**

Comments: This Laboratory Grown Diamond was created by Chemical Vapor Deposition (CVD) growth process. Type IIa



December 31, 2025  
**IGI Report Number** LG762533157  
**OVAL BRILLIANT**  
**LABORATORY GROWN DIAMOND**  
**7.75 X 5.66 X 3.50 MM**  
 Carat Weight **0.97 CARAT**  
 Color Grade **E**  
 Clarity Grade **VVS 2**  
 Polish **EXCELLENT**  
 Symmetry **EXCELLENT**  
 Fluorescence **NONE**  
 Inscription(s) **IGI LG762533157**

Comments: This Laboratory Grown Diamond was created by Chemical Vapor Deposition (CVD) growth process. Type IIa



THIS DOCUMENT WAS PRODUCED WITH THE FOLLOWING SECURITY MEASURES: SPECIAL DOCUMENT PAPER, INK SCREENS, WATERMARK BACKGROUND DESIGNS, HOLOGRAM AND OTHER SECURITY FEATURES NOT LISTED AND DO EXCEED DOCUMENT SECURITY INDUSTRY GUIDELINES.