

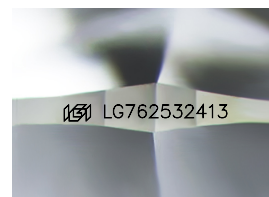
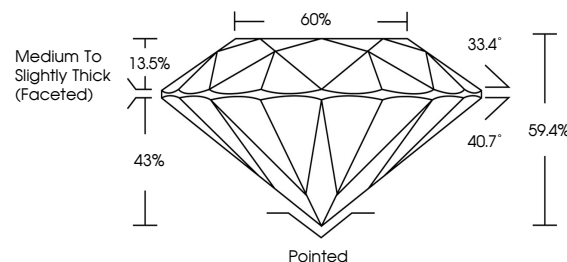


ELECTRONIC COPY

LABORATORY GROWN DIAMOND REPORT

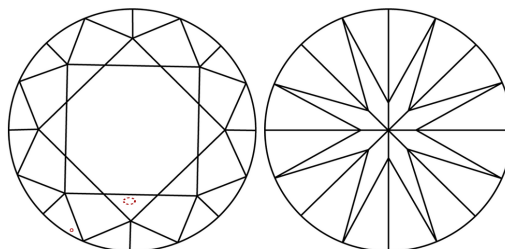
LG762532413
Report verification at lgi.org

PROPORTIONS



Sample Image Used

CLARITY CHARACTERISTICS



KEY TO SYMBOLS

Red symbols indicate internal characteristics.
Green symbols indicate external characteristics.

COLOR

D E F G H I J Faint Very Light Light

CLARITY

| FL | IF | VVS ¹⁻² | VS ¹⁻² | SI ¹⁻² | I ¹⁻³ |
|----------|---------------------|-----------------------------|------------------------|-------------------|------------------|
| Flawless | Internally Flawless | Very Very Slightly Included | Very Slightly Included | Slightly Included | Included |



December 31, 2025

IGI Report Number **LG762532413**

| | |
|-------------|--------------------------|
| Description | LABORATORY GROWN DIAMOND |
|-------------|--------------------------|

Shape and Cutting Style **ROUND BRILLIANT**

Measurements 8.27 - 8.33 X 4.93 MM

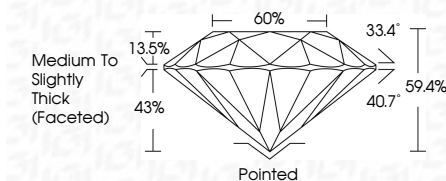
GRADING RESULTS

Carat Weight **2.07 CARATS**

Color Grade E

Clarity Grade VS 1

Cut Grade **IDEAL**



ADDITIONAL GRADING INFORMATION

Polish **EXCELLENT**Symmetry **EXCELLENT**Fluorescence **NONE**Inscription(s) LG762532413

Comments: This Laboratory Grown Diamond was created by Chemical Vapor Deposition (CVD) growth process.
Type IIa



© IGI 2020, International Gemological Institute

FD - 10 20

www.igi.org

THIS DOCUMENT WAS PRODUCED WITH THE FOLLOWING SECURITY MEASURES: SPECIAL DOCUMENT PAPER, INK SCREENS, WATERMARK, BACKGROUND DESIGNS, HOLOGRAM AND OTHER SECURITY FEATURES NOT LISTED AND DO EXCEED DOCUMENT SECURITY INDUSTRY GUIDELINE

December 31, 2025
 GI Report No LG762532413
 ROUND BRILLIANT

| | | |
|------------------------------------|---------------|----------------------|
| 2.07 CARATS | Carat Weight | 2.07 - 8.33 X 6.8 MM |
| E | Color Grade | |
| VS 1 | Clarity Grade | |
| IDP AL | Cut Grade | |
| 59.4% | Depth | |
| 60% | Table | |
| | Girdle | |
| Medium to Slightly Thick (Faceted) | Culet | |
| | Polish | |
| | Symmetry | |
| | Fluorescence | |
| | Comments | see 127495013 |

Comments:
This Laboratory Grown Diamond was
created by Chemical Vapor Deposition
(CVD) growth process.