



ELECTRONIC COPY

LG762530012
Report verification at igi.org



January 7, 2026

IGI Report Number **LG762530012**

Description **LABORATORY GROWN DIAMOND**

Shape and Cutting Style **ROUND BRILLIANT**

Measurements **9.29 - 9.32 X 5.64 MM**

GRADING RESULTS

Carat Weight **3.00 CARATS**

Color Grade **FANCY INTENSE PINK**

Clarity Grade **VS 1**

Cut Grade **IDEAL**

January 7, 2026

IGI Report Number **LG762530012**

Description **LABORATORY GROWN DIAMOND**

Shape and Cutting Style **ROUND BRILLIANT**

Measurements **9.29 - 9.32 X 5.64 MM**

GRADING RESULTS

Carat Weight **3.00 CARATS**

Color Grade **FANCY INTENSE PINK**

Clarity Grade **VS 1**

Cut Grade **IDEAL**

ADDITIONAL GRADING INFORMATION

Polish **EXCELLENT**

Symmetry **EXCELLENT**

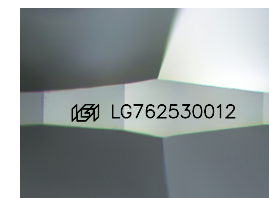
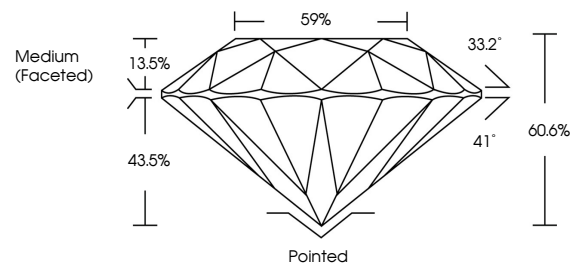
Fluorescence **SLIGHT**

Inscription(s) **LG762530012**

Comments: This Laboratory Grown Diamond was created by Chemical Vapor Deposition (CVD) growth process.

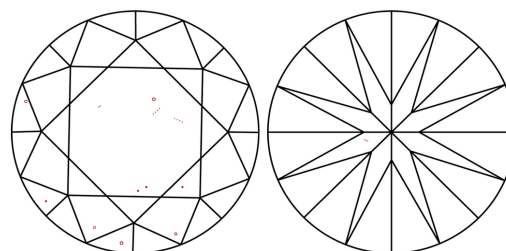
Indications of post-growth treatment.

PROPORTIONS



Sample Image Used

CLARITY CHARACTERISTICS



KEY TO SYMBOLS

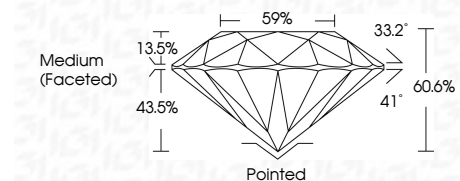
Red symbols indicate internal characteristics.
Green symbols indicate external characteristics.

COLOR

D E F G H I J Faint Very Light Light

CLARITY

FL	IF	VS ¹⁻²	VS ¹⁻²	SI ¹⁻²	I ¹⁻³
Flawless	Internally Flawless	Very Very Slightly Included	Very Slightly Included	Slightly Included	Included



ADDITIONAL GRADING INFORMATION

Polish **EXCELLENT**

Symmetry **EXCELLENT**

Fluorescence **SLIGHT**

Inscription(s) **LG762530012**

Comments: This Laboratory Grown Diamond was created by Chemical Vapor Deposition (CVD) growth process. Indications of post-growth treatment.



IGI



January 7, 2026	3.00 CARATS	Pointed
IGI Report No LG762530012	FANCY INTENSE PINK	EXCELLENT
ROUND BRILLIANT	VS 1	EXCELLENT
9.29 - 9.32 X 5.64 MM	IDEAL	SLIGHT
Color Grade	60.6%	SLIGHT
Clarity Grade	59%	SLIGHT
Depth	Medium (Faceted)	SLIGHT
Table		SLIGHT
Girdle		SLIGHT
Culet		SLIGHT
Polish		SLIGHT
Symmetry		SLIGHT
Fluorescence		SLIGHT
Inscription(s)		SLIGHT
		SLIGHT

Comments: This Laboratory Grown Diamond was created by Chemical Vapor Deposition (CVD) growth process. Indications of post-growth treatment.