



ELECTRONIC COPY

LABORATORY GROWN DIAMOND REPORT

January 2, 2026	
IGI Report Number	LG762528929
Description	LABORATORY GROWN DIAMOND
Shape and Cutting Style	ROUND BRILLIANT
Measurements	6.43 - 6.45 X 4.00 MM
GRADING RESULTS	
Carat Weight	1.03 CARAT
Color Grade	D
Clarity Grade	VS 1
Cut Grade	IDEAL

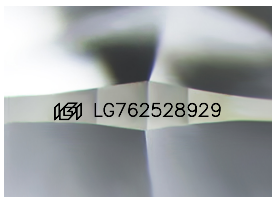
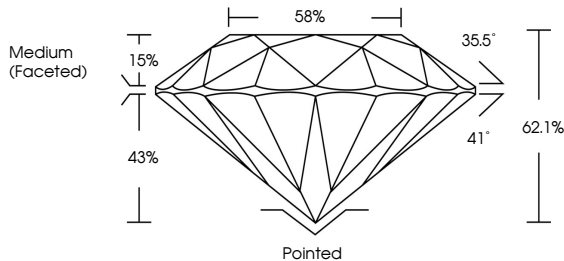
ADDITIONAL GRADING INFORMATION

Polish	EXCELLENT
Symmetry	EXCELLENT
Fluorescence	NONE
Inscription(s)	 LG762528929

Comments: As Grown - No indication of post-growth treatment.
This Laboratory Grown Diamond was created by High Pressure High Temperature (HPHT) growth process.
Type II

LG762528929
Report verification at igi.org

PROPORTIONS



Sample Image Used

COLOR

D E F G H I J Faint Very Light Light

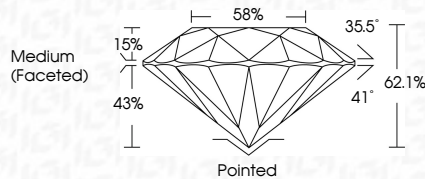
CLARITY

FL	IF	VVS ¹⁻²	VS ¹⁻²	SI ¹⁻²	I ¹⁻³
Flawless	Internally Flawless	Very Very Slightly Included	Very Slightly Included	Slightly Included	Included

LABORATORY GROWN DIAMOND REPORT



January 2, 2026	
IGI Report Number	LG762528929
Description	LABORATORY GROWN DIAMOND
Shape and Cutting Style	ROUND BRILLIANT
Measurements	6.43 - 6.45 X 4.00 MM
GRADING RESULTS	
Carat Weight	1.03 CARAT
Color Grade	D
Clarity Grade	VS 1
Cut Grade	IDEAL



ADDITIONAL GRADING INFORMATION

Polish	EXCELLENT
Symmetry	EXCELLENT
Fluorescence	NONE
Inscription(s)	(GSI) LG762528929
Comments: As Grown - No indication of post-growth treatment.	
This Laboratory Grown Diamond was created by High Pressure High Temperature (HPHT) growth process.	
Type II	



IGI



© IGI 2020, International Gemological Institute

FD - 10 20

www.igi.org



THIS DOCUMENT WAS PRODUCED WITH THE FOLLOWING SECURITY MEASURES: SPECIAL DOCUMENT PAPER, INK SCREENS, WATERMARK, BACKGROUND DESIGNS, HOLOGRAM AND OTHER SECURITY FEATURES NOT LISTED AND DO EXCEED DOCUMENT SECURITY INDUSTRY GUIDELINES

January 2, 2026
IGI Report No LG762528929

ROUND BRILLIANT

6.43 - 6.45 X 4.00 MM

Carat Weight 1.03 CARAT

0
0
0
0
0
0

Color	Clarity	Cut Grade	Weight	Price
D	FL	Ideal	0.50	\$1,000
			0.75	\$1,500
			1.00	\$2,000
			1.25	\$2,500
E	FL	Ideal	0.50	\$800
			0.75	\$1,200
			1.00	\$1,600
			1.25	\$2,000
F	FL	Ideal	0.50	\$600
			0.75	\$900
			1.00	\$1,200
			1.25	\$1,500
G	FL	Ideal	0.50	\$400
			0.75	\$600
			1.00	\$800
			1.25	\$1,000
H	FL	Ideal	0.50	\$250
			0.75	\$400
			1.00	\$550
			1.25	\$700
I	FL	Ideal	0.50	\$150
			0.75	\$250
			1.00	\$350
			1.25	\$450

Depth 62.1%

Girdle

Full fledged	Excellent
Careful	Polish

Symmetry

Inscription(s)

Conclusions

As Grown - No indication of post-growth treatment.

**This Laboratory Grown Diamond was
created by High Pressure High**

Type II
temperature (HFM) growth process.