



ELECTRONIC COPY

LABORATORY GROWN DIAMOND REPORT

LG762528927
Report verification at igi.org

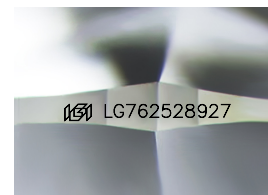
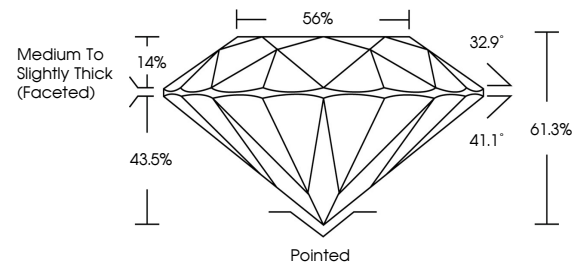
January 6, 2026	
IGI Report Number	LG762528927
Description	LABORATORY GROWN DIAMOND
Shape and Cutting Style	ROUND BRILLIANT
Measurements	6.49 - 6.53 X 4.00 MM
GRADING RESULTS	
Carat Weight	1.04 CARAT
Color Grade	D
Clarity Grade	VVS 2
Cut Grade	IDEAL

ADDITIONAL GRADING INFORMATION

Polish	EXCELLENT
Symmetry	EXCELLENT
Fluorescence	NONE
Inscription(s)	151 LG762528927

Comments: As Grown - No indication of post-growth treatment.
This Laboratory Grown Diamond was created by High Pressure High Temperature (HPHT) growth process.
Type II

PROPORTIONS



Sample Image Used

COLOR

D E F G H I J Faint Very Light Light

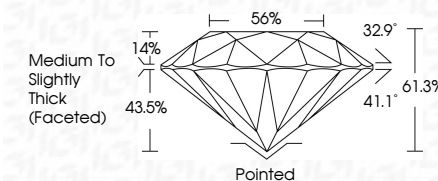
CLARITY

FL	IF	VVS ¹⁻²	VS ¹⁻²	SI ¹⁻²	I ¹⁻³
Flawless	Internally Flawless	Very Very Slightly Included	Very Slightly Included	Slightly Included	Included

LABORATORY GROWN DIAMOND REPORT



January 6, 2026	
IGI Report Number	LG762528927
Description	LABORATORY GROWN DIAMOND
Shape and Cutting Style	ROUND BRILLIANT
Measurements	6.49 - 6.53 X 4.00 MM
GRADING RESULTS	
Carat Weight	1.04 CARAT
Color Grade	D
Clarity Grade	VVS 2
Cut Grade	IDEAL



ADDITIONAL GRADING INFORMATION

Polish	EXCELLENT
Symmetry	EXCELLENT
Fluorescence	NONE
Inscription(s)	(G) LG762528927
Comments: As Grown - No indication of post-growth treatment.	
This Laboratory Grown Diamond was created by High Pressure High Temperature (HPHT) growth process.	
Type II	



© IGI 2020, International Gemological Institute

FD - 10 20

www.igi.org



THIS DOCUMENT WAS PRODUCED WITH THE FOLLOWING SECURITY MEASURES: SPECIAL DOCUMENT PAPER, INK SCREENS, WATERMARK, BACKGROUND DESIGNS, HOLOGRAM AND OTHER SECURITY FEATURES NOT LISTED AND DO EXCEED DOCUMENT SECURITY INDUSTRY GUIDELINES

January 6, 2026
GI Report No LG762528927

IGI Report No LG76

INVESTING IN THE FUTURE

5.49 - 6.63 X 4.00 MM
Carat Weight
1.04 CARAT

Color Grade	D
-------------	---

Clarity Grade	WS 2
I	
II	
III	
IV	
V	
VI	
VII	
VIII	
IX	
X	
XI	
XII	
XIII	
XIV	
XV	
XVI	
XVII	
XVIII	
XIX	
XX	
XXI	
XXII	
XXIII	
XXIV	
XXV	
XXVI	
XXVII	
XXVIII	
XXIX	
XXX	
XXXI	
XXXII	
XXXIII	
XXXIV	
XXXV	
XXXVI	
XXXVII	
XXXVIII	
XXXIX	
XXXX	
XXXXI	
XXXXII	
XXXXIII	
XXXXIV	
XXXXV	
XXXXVI	
XXXXVII	
XXXXVIII	
XXXXIX	
XXXXX	
XXXXXI	
XXXXXII	
XXXXXIII	
XXXXXIV	
XXXXXV	
XXXXXVI	
XXXXXVII	
XXXXXVIII	
XXXXXIX	
XXXXXX	
XXXXXXI	
XXXXXXII	
XXXXXXIII	
XXXXXXIV	
XXXXXXV	
XXXXXXVI	
XXXXXXVII	
XXXXXXVIII	
XXXXXXIX	
XXXXXXX	
XXXXXXXI	
XXXXXXXII	
XXXXXXXIII	
XXXXXXXIV	
XXXXXXXV	
XXXXXXXVI	
XXXXXXXVII	
XXXXXXXVIII	
XXXXXXXIX	
XXXXXXX	
XXXXXXXI	
XXXXXXXII	
XXXXXXXIII	
XXXXXXXIV	
XXXXXXXV	
XXXXXXXVI	
XXXXXXXVII	
XXXXXXXVIII	
XXXXXXXIX	
XXXXXXX	
XXXXXXXI	
XXXXXXXII	
XXXXXXXIII	
XXXXXXXIV	
XXXXXXXV	
XXXXXXXVI	
XXXXXXXVII	
XXXXXXXVIII	
XXXXXXXIX	
XXXXXXX	
XXXXXXXI	
XXXXXXXII	
XXXXXXXIII	
XXXXXXXIV	
XXXXXXXV	
XXXXXXXVI	
XXXXXXXVII	
XXXXXXXVIII	
XXXXXXXIX	
XXXXXXX	
XXXXXXXI	
XXXXXXXII	
XXXXXXXIII	
XXXXXXXIV	
XXXXXXXV	
XXXXXXXVI	
XXXXXXXVII	
XXXXXXXVIII	
XXXXXXXIX	
XXXXXXX	
XXXXXXXI	
XXXXXXXII	
XXXXXXXIII	
XXXXXXXIV	
XXXXXXXV	
XXXXXXXVI	
XXXXXXXVII	
XXXXXXXVIII	
XXXXXXXIX	
XXXXXXX	
XXXXXXXI	
XXXXXXXII	
XXXXXXXIII	
XXXXXXXIV	
XXXXXXXV	
XXXXXXXVI	
XXXXXXXVII	
XXXXXXXVIII	
XXXXXXXIX	
XXXXXXX	
XXXXXXXI	
XXXXXXXII	
XXXXXXXIII	
XXXXXXXIV	
XXXXXXXV	
XXXXXXXVI	
XXXXXXXVII	
XXXXXXXVIII	
XXXXXXXIX	
XXXXXXX	
XXXXXXXI	
XXXXXXXII	
XXXXXXXIII	
XXXXXXXIV	
XXXXXXXV	
XXXXXXXVI	
XXXXXXXVII	
XXXXXXXVIII	
XXXXXXXIX	
XXXXXXX	
XXXXXXXI	
XXXXXXXII	
XXXXXXXIII	
XXXXXXXIV	
XXXXXXXV	
XXXXXXXVI	
XXXXXXXVII	
XXXXXXXVIII	
XXXXXXXIX	
XXXXXXX	
XXXXXXXI	
XXXXXXXII	
XXXXXXXIII	
XXXXXXXIV	
XXXXXXXV	
XXXXXXXVI	
XXXXXXXVII	
XXXXXXXVIII	
XXXXXXXIX	
XXXXXXX	
XXXXXXXI	
XXXXXXXII	
XXXXXXXIII	
XXXXXXXIV	
XXXXXXXV	
XXXXXXXVI	
XXXXXXXVII	
XXXXXXXVIII	
XXXXXXXIX	
XXXXXXX	
XXXXXXXI	
XXXXXXXII	
XXXXXXXIII	
XXXXXXXIV	
XXXXXXXV	
XXXXXXXVI	
XXXXXXXVII	
XXXXXXXVIII	
XXXXXXXIX	
XXXXXXX	
XXXXXXXI	
XXXXXXXII	
XXXXXXXIII	
XXXXXXXIV	
XXXXXXXV	
XXXXXXXVI	
XXXXXXXVII	
XXXXXXXVIII	
XXXXXXXIX	
XXXXXXX	
XXXXXXXI	
XXXXXXXII	
XXXXXXXIII	
XXXXXXXIV	
XXXXXXXV	
XXXXXXXVI	
XXXXXXXVII	
XXXXXXXVIII	
XXXXXXXIX	
XXXXXXX	
XXXXXXXI	
XXXXXXXII	
XXXXXXXIII	
XXXXXXXIV	
XXXXXXXV	
XXXXXXXVI	
XXXXXXXVII	
XXXXXXXVIII	
XXXXXXXIX	
XXXXXXX	
XXXXXXXI	
XXXXXXXII	
XXXXXXXIII	
XXXXXXXIV	
XXXXXXXV	
XXXXXXXVI	
XXXXXXXVII	
XXXXXXXVIII	
XXXXXXXIX	
XXXXXXX	
XXXXXXXI	
XXXXXXXII	
XXXXXXXIII	
XXXXXXXIV	

Depth	Cut Grade	IDEAL
41.88%		

Dep III	61.3%
Table	56%

Girdle

Cut	Price (\$ per carat)	Weight (carats)	Color	Clarity	Shape	Table (%)	Depth (%)	Girdle	Culet	Pavilion angle (deg.)	Coronation angle (deg.)	Hearts & arrows	Fluorescence	Comments
F	\$10,800	1.01	D	SI2	Round	67	33	M-M	None	40.9	35.9	No	Medium	
E	\$11,200	1.01	E	SI2	Round	67	33	M-M	None	40.9	35.9	No	Medium	
D	\$11,600	1.01	D	SI1	Round	67	33	M-M	None	40.9	35.9	No	Medium	
D	\$12,000	1.01	D	SI1	Round	67	33	M-M	None	40.9	35.9	No	Medium	
D	\$12,400	1.01	D	SI1	Round	67	33	M-M	None	40.9	35.9	No	Medium	
D	\$12,800	1.01	D	SI1	Round	67	33	M-M	None	40.9	35.9	No	Medium	
D	\$13,200	1.01	D	SI1	Round	67	33	M-M	None	40.9	35.9	No	Medium	
D	\$13,600	1.01	D	SI1	Round	67	33	M-M	None	40.9	35.9	No	Medium	
D	\$14,000	1.01	D	SI1	Round	67	33	M-M	None	40.9	35.9	No	Medium	
D	\$14,400	1.01	D	SI1	Round	67	33	M-M	None	40.9	35.9	No	Medium	
D	\$14,800	1.01	D	SI1	Round	67	33	M-M	None	40.9	35.9	No	Medium	
D	\$15,200	1.01	D	SI1	Round	67	33	M-M	None	40.9	35.9	No	Medium	
D	\$15,600	1.01	D	SI1	Round	67	33	M-M	None	40.9	35.9	No	Medium	
D	\$16,000	1.01	D	SI1	Round	67	33	M-M	None	40.9	35.9	No	Medium	
D	\$16,400	1.01	D	SI1	Round	67	33	M-M	None	40.9	35.9	No	Medium	
D	\$16,800	1.01	D	SI1	Round	67	33	M-M	None	40.9	35.9	No	Medium	
D	\$17,200	1.01	D	SI1	Round	67	33	M-M	None	40.9	35.9	No	Medium	
D	\$17,600	1.01	D	SI1	Round	67	33	M-M	None	40.9	35.9	No	Medium	
D	\$18,000	1.01	D	SI1	Round	67	33	M-M	None	40.9	35.9	No	Medium	
D	\$18,400	1.01	D	SI1	Round	67	33	M-M	None	40.9	35.9	No	Medium	
D	\$18,800	1.01	D	SI1	Round	67	33	M-M	None	40.9	35.9	No	Medium	
D	\$19,200	1.01	D	SI1	Round	67	33	M-M	None	40.9	35.9	No	Medium	
D	\$19,600	1.01	D	SI1	Round	67	33	M-M	None	40.9	35.9	No	Medium	
D	\$20,000	1.01	D	SI1	Round	67	33	M-M	None	40.9	35.9	No	Medium	
D	\$20,400	1.01	D	SI1	Round	67	33	M-M	None	40.9	35.9	No	Medium	
D	\$20,800	1.01	D	SI1	Round	67	33	M-M	None	40.9	35.9	No	Medium	
D	\$21,200	1.01	D	SI1	Round	67	33	M-M	None	40.9	35.9	No	Medium	
D	\$21,600	1.01	D	SI1	Round	67	33	M-M	None	40.9	35.9	No	Medium	
D	\$22,000	1.01	D	SI1	Round	67	33	M-M	None	40.9	35.9	No	Medium	
D	\$22,400	1.01	D	SI1	Round	67	33	M-M	None	40.9	35.9	No	Medium	
D	\$22,800	1.01	D	SI1	Round	67	33	M-M	None	40.9	35.9	No	Medium	
D	\$23,200	1.01	D	SI1	Round	67	33	M-M	None	40.9	3			

Quiet	Polished
	EXCELLENT

Symmetry

Fluorescence	NONE
Inscription(s)	1681 G762528927

KEY TO TABLES

Comments:
As Grown - No indication of post-growth

treatment.
This Laboratory Grown Diamond was

created by High Pressure High Temperature (HPHT) growth process.

Type II