



ELECTRONIC COPY

LG762526403
Report verification at igi.org



December 31, 2025

IGI Report Number **LG762526403**

Description **LABORATORY GROWN DIAMOND**

Shape and Cutting Style **ROUND BRILLIANT**

Measurements **6.73 - 6.80 X 4.21 MM**

GRADING RESULTS

Carat Weight **1.22 CARAT**

Color Grade **E**

Clarity Grade **VS 1**

Cut Grade **GOOD**

December 31, 2025

IGI Report Number **LG762526403**

Description **LABORATORY GROWN DIAMOND**

Shape and Cutting Style **ROUND BRILLIANT**

Measurements **6.73 - 6.80 X 4.21 MM**

GRADING RESULTS

Carat Weight **1.22 CARAT**

Color Grade **E**

Clarity Grade **VS 1**

Cut Grade **GOOD**

ADDITIONAL GRADING INFORMATION

Polish **VERY GOOD**

Symmetry **VERY GOOD**

Fluorescence **NONE**

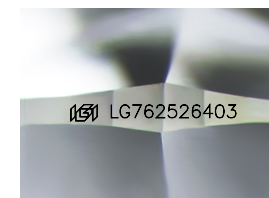
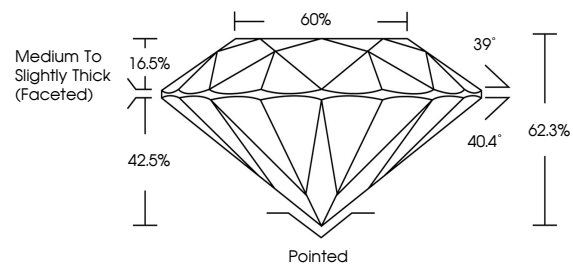
Inscription(s) **IGI LG762526403**

Comments: As Grown - No indication of post-growth treatment.

This Laboratory Grown Diamond was created by High Pressure High Temperature (HPHT) growth process.

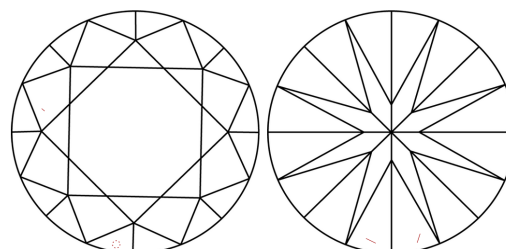
Type II

PROPORTIONS



Sample Image Used

CLARITY CHARACTERISTICS



KEY TO SYMBOLS

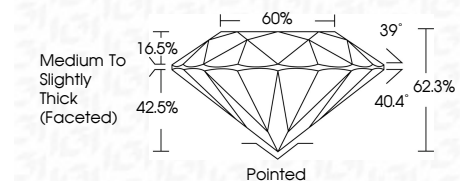
Red symbols indicate internal characteristics.
Green symbols indicate external characteristics.

COLOR

D E F G H I J Faint Very Light Light

CLARITY

FL	IF	VS ¹⁻²	VS ¹⁻²	SI ¹⁻²	I ¹⁻³
Flawless	Internally Flawless	Very Very Slightly Included	Very Slightly Included	Slightly Included	Included



ADDITIONAL GRADING INFORMATION

Polish **VERY GOOD**

Symmetry **VERY GOOD**

Fluorescence **NONE**

Inscription(s) **IGI LG762526403**

Comments: As Grown - No indication of post-growth treatment.

This Laboratory Grown Diamond was created by High Pressure High Temperature (HPHT) growth process.

Type II



IGI



December 31, 2025
IGI Report No LG762526403
ROUND BRILLIANT
6.73 - 6.80 X 4.21 MM
1.22 CARAT
E
Color Grade
VS 1
GOOD
Cut Grade
62.3%
60%
Medium To Slightly Thick (Faceted)
Pointed
VERY GOOD
VERY GOOD
VERY GOOD
NONE
NONE
IGI LG762526403
Inscription(s)
Comments: As Grown - No indication of post-growth treatment.
This Laboratory Grown Diamond was created by High Pressure High Temperature (HPHT) growth process.
Type II