



January 27, 2026

IGI Report Number **LG762522534**

**ROUND BRILLIANT  
LABORATORY GROWN DIAMOND  
5.22 - 5.24 X 3.26 MM**

Carat Weight **0.55 CARAT**  
Color Grade **D**  
Clarity Grade **I.F.**  
Cut Grade **IDEAL**  
Polish **EXCELLENT**  
Symmetry **EXCELLENT**  
Fluorescence **NONE**  
Inscription(s) **IGI LG762522534**

Comments: As Grown - No indication of post-growth treatment. This Laboratory Grown Diamond was created by High Pressure High Temperature (HPHT) growth process. Type II

**LABORATORY GROWN DIAMOND REPORT**

January 27, 2026

IGI Report Number

**LG762522534**

Description

**LABORATORY GROWN DIAMOND**

Shape and Cutting Style

**ROUND BRILLIANT**

Measurements

**5.22 - 5.24 X 3.26 MM**

**GRADING RESULTS**

Carat Weight

**0.55 CARAT**

Color Grade

**D**

Clarity Grade

**INTERNALLY FLAWLESS**

Cut Grade

**IDEAL**

**ADDITIONAL GRADING INFORMATION**

Polish

**EXCELLENT**

Symmetry

**EXCELLENT**

Fluorescence

**NONE**

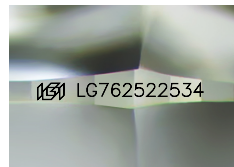
Inscription(s)

**IGI LG762522534**

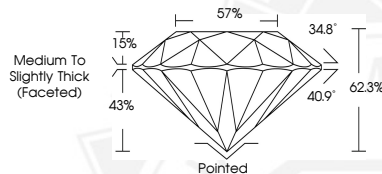
Comments: As Grown - No indication of post-growth treatment.

This Laboratory Grown Diamond was created by High Pressure High Temperature (HPHT) growth process.

Type II



Sample Image Used



January 27, 2026

IGI Report Number **LG762522534**

**ROUND BRILLIANT  
LABORATORY GROWN DIAMOND  
5.22 - 5.24 X 3.26 MM**

Carat Weight **0.55 CARAT**  
Color Grade **D**  
Clarity Grade **I.F.**  
Cut Grade **IDEAL**  
Polish **EXCELLENT**  
Symmetry **EXCELLENT**  
Fluorescence **NONE**  
Inscription(s) **IGI LG762522534**

Comments: As Grown - No indication of post-growth treatment. This Laboratory Grown Diamond was created by High Pressure High Temperature (HPHT) growth process. Type II



THIS DOCUMENT WAS PRODUCED WITH THE FOLLOWING SECURITY MEASURES: SPECIAL DOCUMENT PAPER, INK SCREENS, WATERMARK, BACKGROUND DESIGNS, HOLOGRAM AND OTHER SECURITY FEATURES NOT LISTED AND DO EXCEED DOCUMENT SECURITY INDUSTRY GUIDELINES.