



ELECTRONIC COPY

LG762519533
Report verification at igi.org



February 6, 2026

IGI Report Number **LG762519533**

Description **LABORATORY GROWN DIAMOND**

Shape and Cutting Style **ROUND BRILLIANT**

Measurements **6.51 - 6.56 X 4.00 MM**

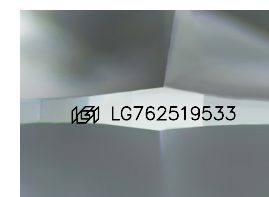
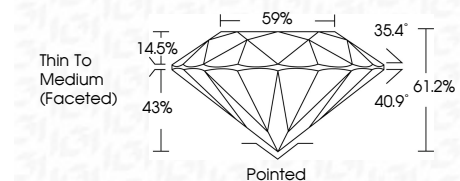
GRADING RESULTS

Carat Weight **1.04 CARAT**

Color Grade **D**

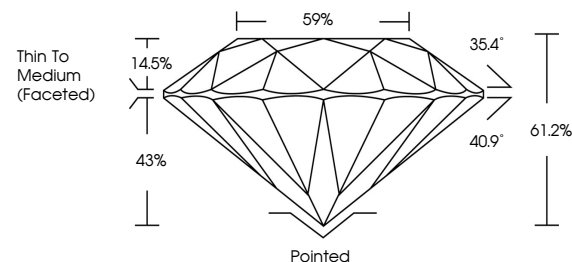
Clarity Grade **VS 1**

Cut Grade **IDEAL**

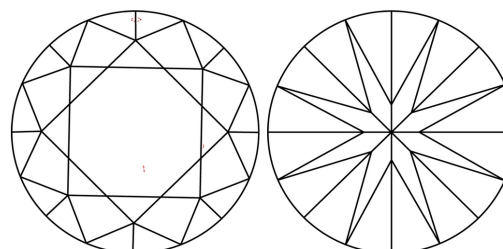


Sample Image Used

PROPORTIONS



CLARITY CHARACTERISTICS



KEY TO SYMBOLS

Red symbols indicate internal characteristics.
Green symbols indicate external characteristics.

COLOR

D E F G H I J Faint Very Light Light

CLARITY

FL	IF	VS ¹⁻²	VS ¹⁻²	SI ¹⁻²	I ¹⁻³
Flawless	Internally Flawless	Very Very Slightly Included	Very Slightly Included	Slightly Included	Included

ADDITIONAL GRADING INFORMATION

Polish **EXCELLENT**

Symmetry **EXCELLENT**

Fluorescence **NONE**

Inscription(s) **IGI LG762519533**

Comments: As Grown - No indication of post-growth treatment.

This Laboratory Grown Diamond was created by High Pressure High Temperature (HPHT) growth process. Type II



IGI



February 6, 2026
IGI Report No LG762519533
ROUND BRILLIANT

1.04 CARAT
D

6.51 - 6.56 X 4.00 MM
61.2%
59%
Thin To Medium (Faceted)

Pointed
EXCELLENT
EXCELLENT
NONE
IGI LG762519533

Culet
Polish
Symmetry
Fluorescence
Inscriptions(s)

Comments:
As Grown - No indication of post-growth treatment.
This Laboratory Grown Diamond was created by High Pressure High Temperature (HPHT) growth process. Type II