



**ELECTRONIC COPY**

LG762514790  
Report verification at igi.org



January 6, 2026  
IGI Report Number **LG762514790**  
Description **LABORATORY GROWN DIAMOND**  
Shape and Cutting Style **MODIFIED HEXAGONAL MIXED CUT**  
Measurements **8.77 X 10.30 X 4.80 MM**  
**GRADING RESULTS**  
Carat Weight **2.56 CARATS**  
Color Grade **D**  
Clarity Grade **VS 1**

**LABORATORY GROWN DIAMOND REPORT**

January 6, 2026  
IGI Report Number **LG762514790**  
Description **LABORATORY GROWN DIAMOND**  
Shape and Cutting Style **MODIFIED HEXAGONAL MIXED CUT**  
Measurements **8.77 X 10.30 X 4.80 MM**

**GRADING RESULTS**

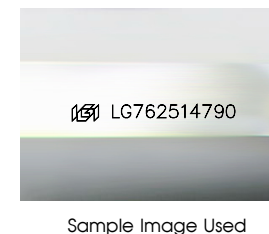
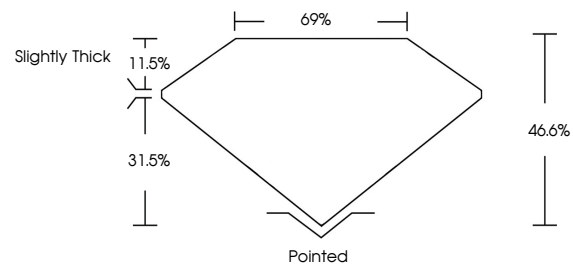
Carat Weight **2.56 CARATS**  
Color Grade **D**  
Clarity Grade **VS 1**

**ADDITIONAL GRADING INFORMATION**

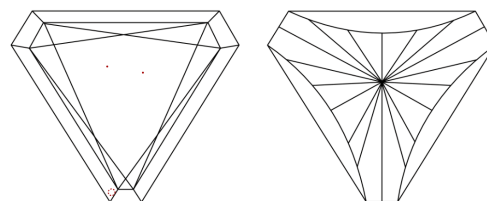
Polish **EXCELLENT**  
Symmetry **EXCELLENT**  
Fluorescence **NONE**  
Inscription(s) **IGI LG762514790**

Comments: This Laboratory Grown Diamond was created by Chemical Vapor Deposition (CVD) growth process.  
Type IIa

**PROPORTIONS**



**CLARITY CHARACTERISTICS**



**KEY TO SYMBOLS**

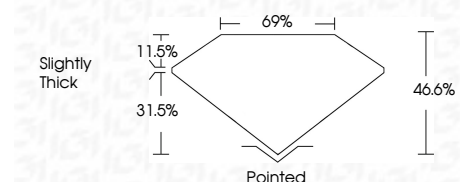
Red symbols indicate internal characteristics.  
Green symbols indicate external characteristics.

**COLOR**

D E F G H I J Faint Very Light Light

**CLARITY**

FL	IF	VS <sup>1-2</sup>	VS <sup>1-2</sup>	SI <sup>1-2</sup>	I <sup>1-3</sup>
Flawless	Internally Flawless	Very Very Slightly Included	Very Slightly Included	Slightly Included	Included



**ADDITIONAL GRADING INFORMATION**

Polish **EXCELLENT**  
Symmetry **EXCELLENT**  
Fluorescence **NONE**  
Inscription(s) **IGI LG762514790**  
Comments: This Laboratory Grown Diamond was created by Chemical Vapor Deposition (CVD) growth process.  
Type IIa



January 6, 2026  
IGI Report No **LG762514790**  
**MODIFIED HEXAGONAL MIXED CUT**  
**8.77 X 10.30 X 4.80 MM**  
Carat Weight **2.56 CARATS**  
Color Grade **D**  
Clarity Grade **VS 1**  
Depth **46.6%**  
Table **69%**  
Girdle **Slightly Thick**  
Culet **Pointed**  
Polish **EXCELLENT**  
Symmetry **EXCELLENT**  
Fluorescence **NONE**  
Inscription(s) **IGI LG762514790**  
Comments: This Laboratory Grown Diamond was created by Chemical Vapor Deposition (CVD) growth process.  
Type IIa