



ELECTRONIC COPY

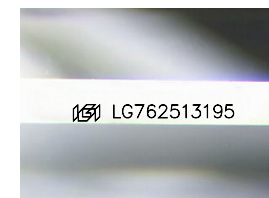
LG762513195
Report verification at igi.org



January 1, 2026
IGI Report Number **LG762513195**
Description **LABORATORY GROWN DIAMOND**
Shape and Cutting Style **EMERALD CUT**
Measurements **12.11 X 8.75 X 5.92 MM**

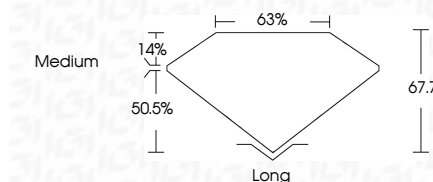
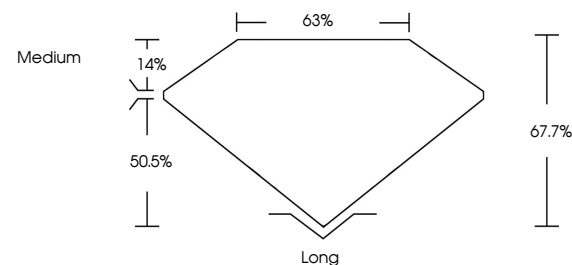
GRADING RESULTS

Carat Weight **6.08 CARATS**
Color Grade **D**
Clarity Grade **VVS 2**

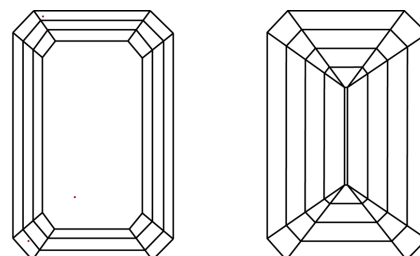


Sample Image Used

PROPORTIONS



CLARITY CHARACTERISTICS



KEY TO SYMBOLS

Red symbols indicate internal characteristics.
Green symbols indicate external characteristics.

COLOR

D E F G H I J Faint Very Light Light

CLARITY

FL	IF	VVS ¹⁻²	VS ¹⁻²	SI ¹⁻²	I ¹⁻³
Flawless	Internally Flawless	Very Very Slightly Included	Very Slightly Included	Slightly Included	Included

ADDITIONAL GRADING INFORMATION

Polish **EXCELLENT**
Symmetry **EXCELLENT**
Fluorescence **NONE**
Inscription(s) **IGI LG762513195**
Comments: This Laboratory Grown Diamond was created by Chemical Vapor Deposition (CVD) growth process.
Type IIa



IGI



January 1, 2026
IGI Report No LG762513195
EMERALD CUT
12.11 X 8.75 X 5.92 MM
6.08 CARATS
D
VVS 2
67.7%
63%
Medium
Long
EXCELLENT
EXCELLENT
NONE
IGI LG762513195
Comments: This Laboratory Grown Diamond was created by Chemical Vapor Deposition (CVD) growth process.
Type IIa