



**ELECTRONIC COPY**

## LABORATORY GROWN DIAMOND REPORT

|                         |                          |
|-------------------------|--------------------------|
| December 30, 2025       |                          |
| IGI Report Number       | LG762513113              |
| Description             | LABORATORY GROWN DIAMOND |
| Shape and Cutting Style | OVAL BRILLIANT           |
| Measurements            | 10.00 X 6.95 X 4.39 MM   |

## GRADING RESULTS

|               |             |
|---------------|-------------|
| Carat Weight  | 2.01 CARATS |
| Color Grade   | G           |
| Clarity Grade | VS 1        |

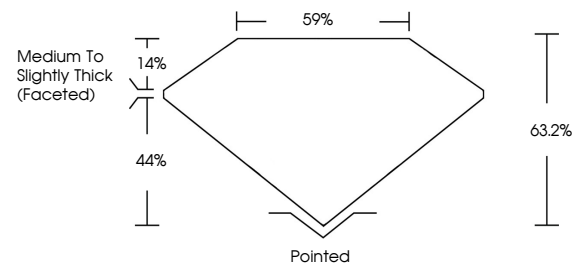
### ADDITIONAL GRADING INFORMATION

|                |   |
|----------------|---|
| Polish         | EXCELLENT   |
| Symmetry       | EXCELLENT   |
| Fluorescence   | NONE  |
| Inscription(s) |  LG762513113 |

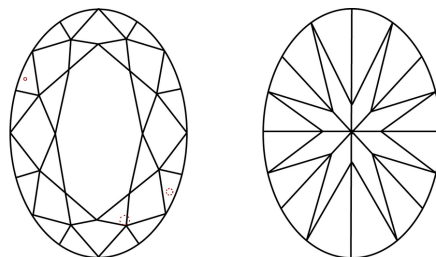
Comments: This Laboratory Grown Diamond was created by Chemical Vapor Deposition (CVD) growth process.  
Type IIa

LG762513113  
Report verification at lgi.org

## PROPORTIONS

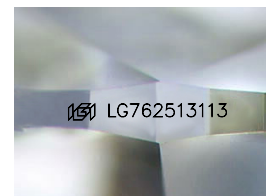


## CLARITY CHARACTERISTICS



## KEY TO SYMBOLS

Red symbols indicate internal characteristics.  
Green symbols indicate external characteristics.



Sample Image Used

**COLOR**

D E F G H I J Faint Very Light Light

## CLARITY

| FL       | IF                  | VVS <sup>1-2</sup>          | VS <sup>1-2</sup>      | SI <sup>1-2</sup> | I <sup>1-3</sup> |
|----------|---------------------|-----------------------------|------------------------|-------------------|------------------|
| Flawless | Internally Flawless | Very Very Slightly Included | Very Slightly Included | Slightly Included | Included         |

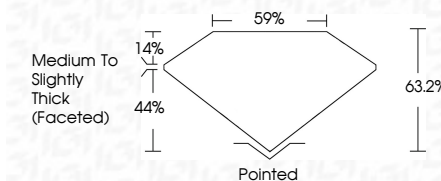
## LABORATORY GROWN DIAMOND REPORT



|                         |                          |
|-------------------------|--------------------------|
| December 30, 2025       |                          |
| IGI Report Number       | LG762513113              |
| Description             | LABORATORY GROWN DIAMOND |
| Shape and Cutting Style | OVAL BRILLIANT           |
| Measurements            | 10.00 X 6.95 X 4.39 MM   |

## GRADING RESULTS

|               |             |
|---------------|-------------|
| Carat Weight  | 2.01 CARATS |
| Color Grade   | G           |
| Clarity Grade | VS 1        |



### ADDITIONAL GRADING INFORMATION

|  |   |
|--|---|
| Polish   | EXCELLENT   |
| Symmetry   | EXCELLENT   |
| Fluorescence   | NONE  |
| Inscription(s)   |  LG762513113 |
| Comments: This Laboratory Grown Diamond was created by Chemical Vapor Deposition (CVD) growth process. |   |
| Type IIa   |   |



© IGI 2020, International Gemological Institute

FD - 10 20

**www.igi.org**

THIS DOCUMENT WAS PRODUCED WITH THE FOLLOWING SECURITY MEASURES: SPECIAL DOCUMENT PAPER, INK SCREENS, WATERMARK, BACKGROUND DESIGNS, HOLOGRAM AND OTHER SECURITY FEATURES NOT LISTED AND DO EXCEED DOCUMENT SECURITY INDUSTRY GUIDELINES

December 30, 2025  
LGI Report No LG762513113  
OVAL BRILLIANT

|                   |                        |           |             |                                    |
|-------------------|------------------------|-----------|-------------|------------------------------------|
| LOVAL BRILLIANT   | 10.00 X 6.95 X 4.99 MM |           | 2.01 CARATS |                                    |
|                   | Carat Weight           | Color     | Clarity     | Cut                                |
| Color Grade       |                        | Depth     | Table       | Grade                              |
| Clarity Grade     |                        | Depth     | Table       | Grade                              |
| VS 1              |                        | 63.2%     | 59%         | Medium To Slightly Thick (faceted) |
| Pointed           |                        | EXCELLENT | EXCELLENT   | NONE                               |
| 4mm (27.05x13.13x |                        |           |             |                                    |

**Comments:**  
This Laboratory Grown Diamond was  
created by Chemical Vapor Deposition  
(CVD) growth process.