



ELECTRONIC COPY

LABORATORY GROWN DIAMOND REPORT

| | |
|-------------------------|--------------------------|
| January 27, 2026 | |
| IGI Report Number | LG762510526 |
| Description | LABORATORY GROWN DIAMOND |
| Shape and Cutting Style | ROUND BRILLIANT |
| Measurements | 6.42 - 6.47 X 4.00 MM |

GRADING RESULTS

| | |
|---------------|------------|
| Carat Weight | 1.02 CARAT |
| Color Grade | D |
| Clarity Grade | VVS 2 |
| Cut Grade | IDEAL |

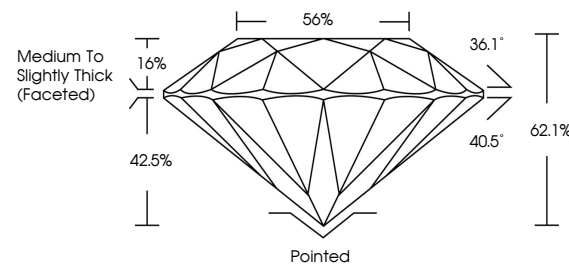
ADDITIONAL GRADING INFORMATION

| | |
|----------------|-----------------|
| Polish | EXCELLENT |
| Symmetry | EXCELLENT |
| Fluorescence | NONE |
| Inscription(s) | 151 LG762510526 |

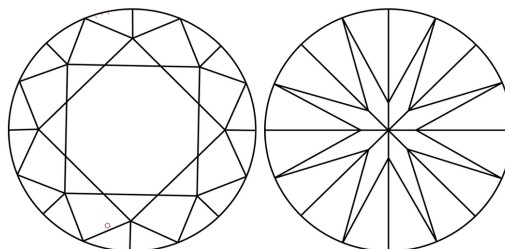
Comments: As Grown - No indication of post-growth treatment.
This Laboratory Grown Diamond was created by High Pressure High Temperature (HPHT) growth process.
Type II

LG762510526
Report verification at lgi.org

PROPORTIONS

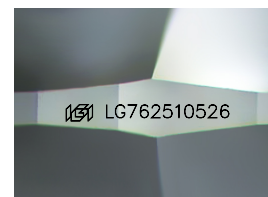


CLARITY CHARACTERISTICS



KEY TO SYMBOLS

Red symbols indicate internal characteristics.
Green symbols indicate external characteristics.



Sample Image Used

COLOR

D E F G H I J Faint Very Light Light

CLARITY

| FL | IF | VVS ¹⁻² | VS ¹⁻² | SI ¹⁻² | I ¹⁻³ |
|----------|---------------------|-----------------------------|------------------------|-------------------|------------------|
| Flawless | Internally Flawless | Very Very Slightly Included | Very Slightly Included | Slightly Included | Included |

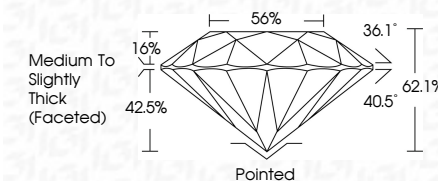
LABORATORY GROWN DIAMOND REPORT




| | |
|-------------------------|--------------------------|
| January 27, 2026 | |
| IGI Report Number | LG762510526 |
| Description | LABORATORY GROWN DIAMOND |
| Shape and Cutting Style | ROUND BRILLIANT |
| Measurements | 6.42 - 6.47 X 4.00 MM |

GRADING RESULTS

| | |
|---------------|------------|
| Carat Weight | 1.02 CARAT |
| Color Grade | D |
| Clarity Grade | VVS 2 |
| Cut Grade | IDEAL |



ADDITIONAL GRADING INFORMATION

| | |
|--|---|
| Polish | EXCELLENT |
| Symmetry | EXCELLENT |
| Fluorescence | NONE |
| Inscription(s) |  LG762510526 |
| <p>Comments: As Grown - No indication of post-growth treatment.</p> <p>This Laboratory Grown Diamond was created by High Pressure High Temperature (HPHT) growth process.</p> <p>Type II</p> | |



© IGI 2020, International Gemological Institute

FD - 10 20



THIS DOCUMENT WAS PRODUCED WITH THE FOLLOWING SECURITY MEASURES: SPECIAL DOCUMENT PAPER, INK SCREENS, WATERMARK, BACKGROUND DESIGNS, HOLOGRAM, AND OTHER SECURITY FEATURES NOT LISTED AND DO EXCEED DOCUMENT SECURITY INDUSTRY GUIDELINES.

www.igi.org

| | | | |
|---------------------------|-----------------|-----------------|------------------------------------|
| January 27, 2026 | Color Weight | Carat Weight | 1.02 CARAT |
| GI Report No. LG742510626 | Color Grade | Color Grade | D |
| ROUND BRILLIANT | Clarity Grade | Clarity Grade | VVS 2 |
| | Cut Grade | Cut Grade | IDEAL |
| | Depth | Depth | 62.1% |
| | Table | Table | 55% |
| | Girdle | Girdle | Medium to Slightly Thick (Faceted) |
| | Culet | Culet | Polished |
| | Polish | Polish | EXCELLENT |
| | Symmetry | Symmetry | EXCELLENT |
| | Fluorescence | Fluorescence | NONE |
| | Inscriptions(s) | Inscriptions(s) | 4691 LG742510626 |

Comments:
 None - No indication of post-growth treatment.
 This Laboratory Grown Diamond was created by High Pressure High Temperature (HPHT) growth process.