



ELECTRONIC COPY

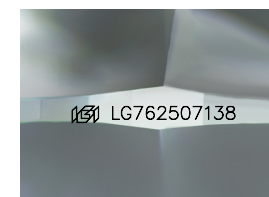
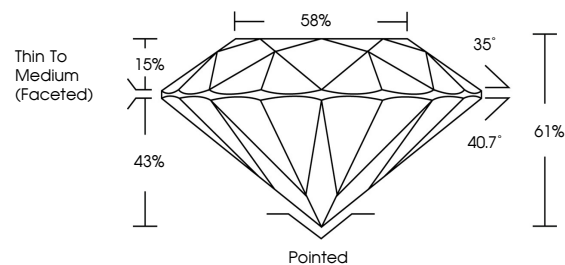
LG762507138
Report verification at igi.org



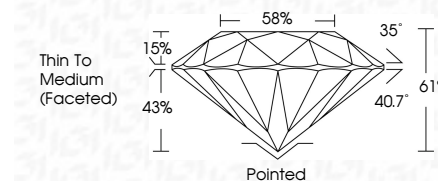
December 29, 2025
IGI Report Number **LG762507138**
Description **LABORATORY GROWN DIAMOND**
Shape and Cutting Style **ROUND BRILLIANT**
Measurements **8.14 - 8.17 X 4.97 MM**
GRADING RESULTS
Carat Weight **2.02 CARATS**
Color Grade **E**
Clarity Grade **VS 1**
Cut Grade **IDEAL**

December 29, 2025
IGI Report Number **LG762507138**
Description **LABORATORY GROWN DIAMOND**
Shape and Cutting Style **ROUND BRILLIANT**
Measurements **8.14 - 8.17 X 4.97 MM**
GRADING RESULTS
Carat Weight **2.02 CARATS**
Color Grade **E**
Clarity Grade **VS 1**
Cut Grade **IDEAL**

PROPORTIONS



Sample Image Used



ADDITIONAL GRADING INFORMATION
Polish **EXCELLENT**
Symmetry **EXCELLENT**
Fluorescence **NONE**
Inscription(s) **IGI LG762507138**

COLOR

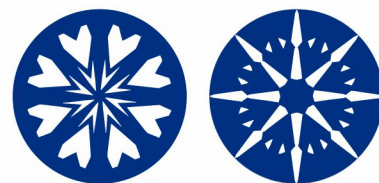
D E F G H I J Faint Very Light Light

CLARITY

FL	IF	VS ¹⁻²	VS ¹⁻²	SI ¹⁻²	I ¹⁻³
Flawless	Internally Flawless	Very Very Slightly Included	Very Slightly Included	Slightly Included	Included

ADDITIONAL GRADING INFORMATION

Polish **EXCELLENT**
Symmetry **EXCELLENT**
Fluorescence **NONE**
Inscription(s) **IGI LG762507138**
Comments: HEARTS & ARROWS
This Laboratory Grown Diamond was created by Chemical Vapor Deposition (CVD) growth process. Type IIa



December 29, 2025
IGI Report No **LG762507138**
ROUND BRILLIANT
8.14 - 8.17 X 4.97 MM
Carat Weight **2.02 CARATS**
Color Grade **E**
Clarity Grade **VS 1**
Cut Grade **IDEAL**
Depth **61%**
Table **58%**
Girdle **Thin To Medium (Faceted)**
Culet **Pointed**
Polish **EXCELLENT**
Symmetry **EXCELLENT**
Fluorescence **NONE**
Inscriptions(s) **IGI LG762507138**
Comments: **HEARTS & ARROWS**
This Laboratory Grown Diamond was created by Chemical Vapor Deposition (CVD) growth process. Type IIa