



**ELECTRONIC COPY**

## LABORATORY GROWN DIAMOND REPORT

LG762505098  
Report verification at [igi.org](https://igi.org)

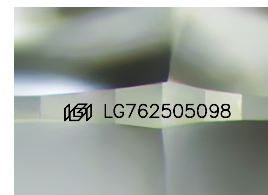
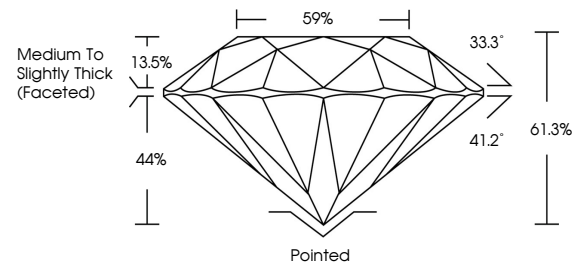
January 1, 2026	
IGI Report Number	LG762505098
Description	LABORATORY GROWN DIAMOND
Shape and Cutting Style	ROUND BRILLIANT
Measurements	8.08 - 8.11 X 4.97 MM
GRADING RESULTS	
Carat Weight	2.00 CARATS
Color Grade	D
Clarity Grade	VS 1
Cut Grade	IDEAL

### ADDITIONAL GRADING INFORMATION

Polish	EXCELLENT
Symmetry	EXCELLENT
Fluorescence	NONE
Inscription(s)	 LG762505098

Comments: This Laboratory Grown Diamond was created by Chemical Vapor Deposition (CVD) growth process.  
Type IIa

## PROPORTIONS



Sample Image Used

**COLOR**

D E F G H I J Faint Very Light Light

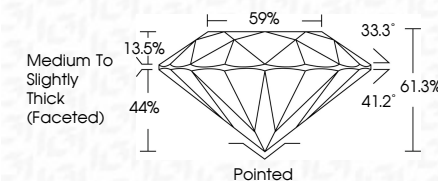
## CLARITY

FL	IF	VVS <sup>1-2</sup>	VS <sup>1-2</sup>	SI <sup>1-2</sup>	I <sup>1-3</sup>
Flawless	Internally Flawless	Very Very Slightly Included	Very Slightly Included	Slightly Included	Included

## LABORATORY GROWN DIAMOND REPORT



January 1, 2026	
IGI Report Number	LG762505098
Description	LABORATORY GROWN DIAMOND
Shape and Cutting Style	ROUND BRILLIANT
Measurements	8.08 - 8.11 X 4.97 MM
GRADING RESULTS	
Carat Weight	2.00 CARATS
Color Grade	D
Clarity Grade	VS 1
Cut Grade	IDEAL



### ADDITIONAL GRADING INFORMATION

Polish	EXCELLENT
Symmetry	EXCELLENT
Fluorescence	NONE
Inscription(s)	 LG762505098
<p>Comments: This Laboratory Grown Diamond was created by Chemical Vapor Deposition (CVD) growth process.</p> <p>Type IIa</p>	



© IGI 2020, International Gemological Institute

FD - 10 20



THIS DOCUMENT WAS PRODUCED WITH THE FOLLOWING SECURITY MEASURES: SPECIAL DOCUMENT PAPER, INK SCREENS, WATERMARK, BACKGROUND DESIGNS, HOLOGRAM AND OTHER SECURITY FEATURES NOT LISTED AND DO EXCEED DOCUMENT SECURITY INDUSTRY GUIDELINES

**www.igi.org**

January 1, 2026  
GI Report No LG762505098

ROUND BRILLIANT	0.08 - 0.11 X 4.97 MM	210 CARATS	VS 1	IDEAL	61.5%	59%	Medium to Slightly Thick (Faceted)	Polished	EXCELLENT	NONE	Fluorescence
		Carat Weight	Clarity Grade	Color Grade	Cut Grade	Depth	Table	Grade	Polish	Symmetry	

**Comments:**  
This Laboratory Grown Diamond was  
created by Chemical Vapor Deposition  
(CVD) growth process.