



ELECTRONIC COPY

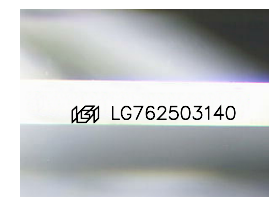
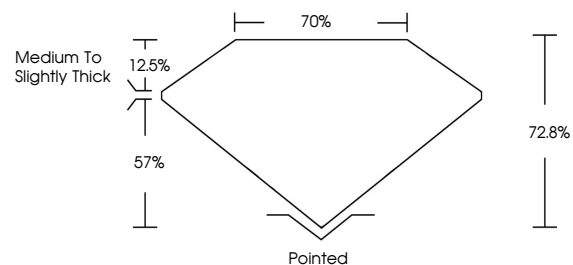
LG762503140
Report verification at igi.org



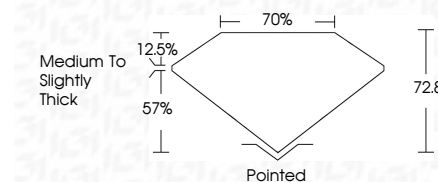
January 1, 2026
IGI Report Number **LG762503140**
Description **LABORATORY GROWN DIAMOND**
Shape and Cutting Style **PRINCESS CUT**
Measurements **8.51 X 8.48 X 6.17 MM**
GRADING RESULTS
Carat Weight **3.86 CARATS**
Color Grade **G**
Clarity Grade **VVS 2**

January 1, 2026
IGI Report Number **LG762503140**
Description **LABORATORY GROWN DIAMOND**
Shape and Cutting Style **PRINCESS CUT**
Measurements **8.51 X 8.48 X 6.17 MM**
GRADING RESULTS
Carat Weight **3.86 CARATS**
Color Grade **G**
Clarity Grade **VVS 2**

PROPORTIONS



Sample Image Used



ADDITIONAL GRADING INFORMATION

Polish **EXCELLENT**
Symmetry **EXCELLENT**
Fluorescence **NONE**
Inscription(s) **IGI LG762503140**

Comments: This Laboratory Grown Diamond was created by Chemical Vapor Deposition (CVD) growth process.
Type IIa

ADDITIONAL GRADING INFORMATION

Polish **EXCELLENT**
Symmetry **EXCELLENT**
Fluorescence **NONE**
Inscription(s) **IGI LG762503140**
Comments: This Laboratory Grown Diamond was created by Chemical Vapor Deposition (CVD) growth process.
Type IIa

COLOR

D E F G H I J Faint Very Light Light

CLARITY

FL	IF	VVS ¹⁻²	VS ¹⁻²	SI ¹⁻²	I ¹⁻³
Flawless	Internally Flawless	Very Very Slightly Included	Very Slightly Included	Slightly Included	Included



IGI



January 1, 2026
IGI Report No **LG762503140**
PRINCESS CUT
8.51 X 8.48 X 6.17 MM
Carat Weight **3.86 CARATS**
Color Grade **G**
Clarity Grade **VVS 2**
Table **72.8%**
Girdle **70%**
Culet **Medium to Slightly Thick**
Polish **Pointed**
Symmetry **EXCELLENT**
Fluorescence **NONE**
Inscription(s) **IGI LG762503140**
Comments: This Laboratory Grown Diamond was created by Chemical Vapor Deposition (CVD) growth process.
Type IIa