



ELECTRONIC COPY

LABORATORY GROWN DIAMOND REPORT

December 31, 2025  
IGI Report Number LG762501296  
Description LABORATORY GROWN DIAMOND  
Shape and Cutting Style CUT CORNERED RECTANGULAR MODIFIED BRILLIANT  
Measurements 15.45 X 10.75 X 7.02 MM

GRADING RESULTS

Carat Weight 10.31 CARATS  
Color Grade E  
Clarity Grade VVS 2

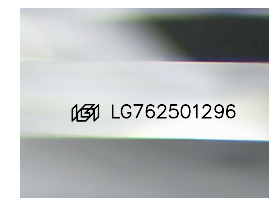
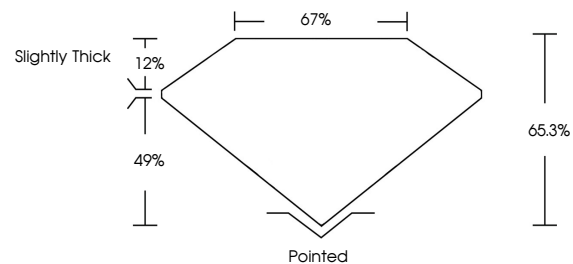
ADDITIONAL GRADING INFORMATION

Polish EXCELLENT  
Symmetry EXCELLENT  
Fluorescence NONE

Inscription(s) LG762501296

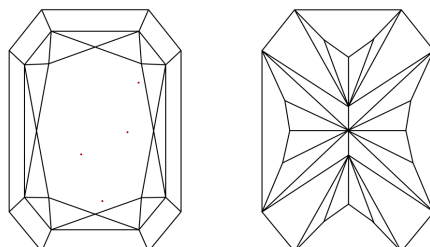
Comments: This Laboratory Grown Diamond was created by Chemical Vapor Deposition (CVD) growth process.  
Type IIa

PROPORTIONS



Sample Image Used

CLARITY CHARACTERISTICS



KEY TO SYMBOLS

Red symbols indicate internal characteristics.  
Green symbols indicate external characteristics.

COLOR

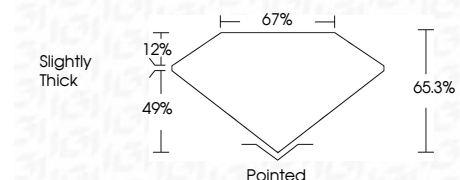
D E F G H I J Faint Very Light Light

CLARITY

FL IF VVS<sup>1-2</sup> VS<sup>1-2</sup> SI<sup>1-2</sup> I<sup>1-3</sup>  
Flawless Internally Flawless Very Very Slightly Included Very Slightly Included Slightly Included Included



December 31, 2025  
IGI Report Number LG762501296  
Description LABORATORY GROWN DIAMOND  
Shape and Cutting Style CUT CORNERED RECTANGULAR MODIFIED BRILLIANT  
Measurements 15.45 X 10.75 X 7.02 MM  
GRADING RESULTS  
Carat Weight 10.31 CARATS  
Color Grade E  
Clarity Grade VVS 2



ADDITIONAL GRADING INFORMATION

Polish EXCELLENT  
Symmetry EXCELLENT  
Fluorescence NONE  
Inscription(s) LG762501296  
Comments: This Laboratory Grown Diamond was created by Chemical Vapor Deposition (CVD) growth process.  
Type IIa



December 31, 2025  
IGI Report No LG762501296  
CUT CORNERED RECT. MODIFIED BRILLIANT  
15.45 X 10.75 X 7.02 MM  
10.31 CARATS  
E  
VVS 2  
65.3%  
49%  
12%  
Slightly Thick  
Pointed  
EXCELLENT  
EXCELLENT  
NONE  
None  
 LG762501296  
Comments: This Laboratory Grown Diamond was created by Chemical Vapor Deposition (CVD) growth process.  
Type IIa