



**ELECTRONIC COPY**

LG761569469  
Report verification at igi.org



December 31, 2025

IGI Report Number **LG761569469**

Description **LABORATORY GROWN DIAMOND**

Shape and Cutting Style **CUT CORNERED  
RECTANGULAR MODIFIED  
BRILLIANT**

Measurements **10.02 X 7.26 X 4.86 MM**

**GRADING RESULTS**

Carat Weight **3.10 CARATS**

Color Grade **E**

Clarity Grade **VVS 2**

December 31, 2025

IGI Report Number **LG761569469**

Description **LABORATORY GROWN DIAMOND**

Shape and Cutting Style **CUT CORNERED RECTANGULAR  
MODIFIED BRILLIANT**

Measurements **10.02 X 7.26 X 4.86 MM**

**GRADING RESULTS**

Carat Weight **3.10 CARATS**

Color Grade **E**

Clarity Grade **VVS 2**

**ADDITIONAL GRADING INFORMATION**

Polish **EXCELLENT**

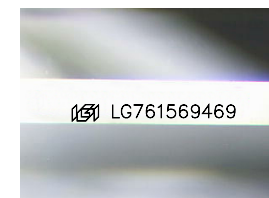
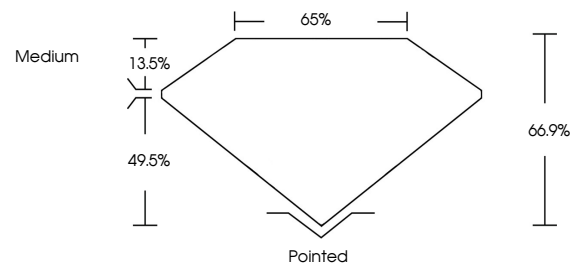
Symmetry **EXCELLENT**

Fluorescence **NONE**

Inscription(s) **IGI LG761569469**

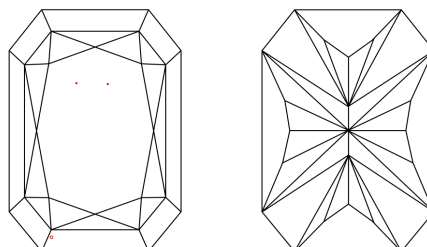
Comments: This Laboratory Grown Diamond was created by Chemical Vapor Deposition (CVD) growth process. Type IIa

**PROPORTIONS**



Sample Image Used

**CLARITY CHARACTERISTICS**



**KEY TO SYMBOLS**

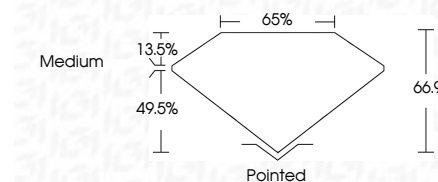
Red symbols indicate internal characteristics.  
Green symbols indicate external characteristics.

**COLOR**

D E F G H I J Faint Very Light Light

**CLARITY**

FL	IF	VVS <sup>1-2</sup>	VS <sup>1-2</sup>	SI <sup>1-2</sup>	I <sup>1-3</sup>
Flawless	Internally Flawless	Very Very Slightly Included	Very Slightly Included	Slightly Included	Included



**ADDITIONAL GRADING INFORMATION**

Polish **EXCELLENT**

Symmetry **EXCELLENT**

Fluorescence **NONE**

Inscription(s) **IGI LG761569469**

Comments: This Laboratory Grown Diamond was created by Chemical Vapor Deposition (CVD) growth process. Type IIa



**IGI**



December 31, 2025  
IGI Report No LG761569469  
CUT CORNERED RECT. MODIFIED BRILLIANT

3.10 CARATS  
E

Carat Weight  
Color Grade  
Clarity Grade  
Table  
Depth  
Girdle  
Medium

Pointed  
EXCELLENT  
EXCELLENT  
NONE  
IGI LG761569469

Comments: This Laboratory Grown Diamond was created by Chemical Vapor Deposition (CVD) growth process. Type IIa