



**ELECTRONIC COPY**

LG761569465  
Report verification at igi.org



December 30, 2025

IGI Report Number **LG761569465**

Description **LABORATORY GROWN DIAMOND**

Shape and Cutting Style **CUT CORNERED  
RECTANGULAR MODIFIED  
BRILLIANT**

Measurements **10.33 X 7.14 X 4.84 MM**

**GRADING RESULTS**

Carat Weight **3.07 CARATS**

Color Grade **F**

Clarity Grade **VS 1**

December 30, 2025

IGI Report Number **LG761569465**

Description **LABORATORY GROWN DIAMOND**

Shape and Cutting Style **CUT CORNERED RECTANGULAR  
MODIFIED BRILLIANT**

Measurements **10.33 X 7.14 X 4.84 MM**

**GRADING RESULTS**

Carat Weight **3.07 CARATS**

Color Grade **F**

Clarity Grade **VS 1**

**ADDITIONAL GRADING INFORMATION**

Polish **EXCELLENT**

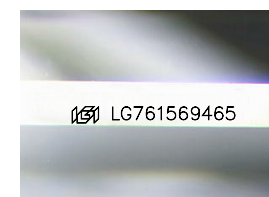
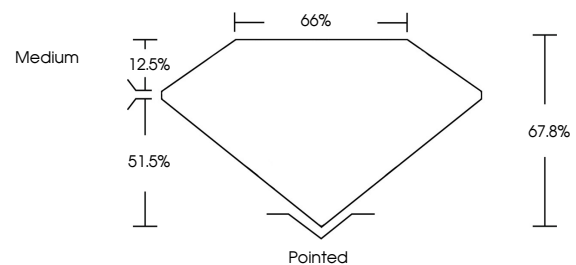
Symmetry **EXCELLENT**

Fluorescence **NONE**

Inscription(s) **IGI LG761569465**

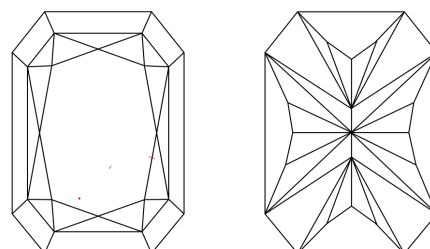
Comments: This Laboratory Grown Diamond was created by Chemical Vapor Deposition (CVD) growth process. Type IIa

**PROPORTIONS**



Sample Image Used

**CLARITY CHARACTERISTICS**



**KEY TO SYMBOLS**

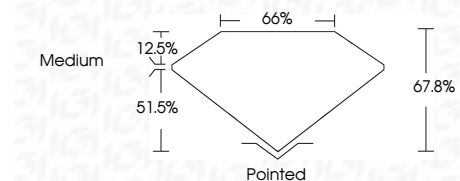
Red symbols indicate internal characteristics.  
Green symbols indicate external characteristics.

**COLOR**

D E F G H I J Faint Very Light Light

**CLARITY**

| FL       | IF                  | VS <sup>1-2</sup>           | VS <sup>1-2</sup>      | SI <sup>1-2</sup> | I <sup>1-3</sup> |
|----------|---------------------|-----------------------------|------------------------|-------------------|------------------|
| Flawless | Internally Flawless | Very Very Slightly Included | Very Slightly Included | Slightly Included | Included         |



**ADDITIONAL GRADING INFORMATION**

Polish **EXCELLENT**

Symmetry **EXCELLENT**

Fluorescence **NONE**

Inscription(s) **IGI LG761569465**

Comments: This Laboratory Grown Diamond was created by Chemical Vapor Deposition (CVD) growth process. Type IIa



**IGI**



|                   |                           |                                       |                        |              |             |               |       |       |        |         |           |           |              |                 |
|-------------------|---------------------------|---------------------------------------|------------------------|--------------|-------------|---------------|-------|-------|--------|---------|-----------|-----------|--------------|-----------------|
| December 30, 2025 | IGI Report No LG761569465 | CUT CORNERED RECT. MODIFIED BRILLIANT | 10.33 X 7.14 X 4.84 MM | 3.07 CARATS  | F           | VS 1          | 67.8% | 65%   | Medium | Pointed | EXCELLENT | EXCELLENT | NONE         | IGI LG761569465 |
|                   |                           |                                       |                        | Carat Weight | Color Grade | Clarity Grade | Depth | Table | Graile | Culet   | Polish    | Symmetry  | Fluorescence | Inscription(s)  |

Comments: This Laboratory Grown Diamond was created by Chemical Vapor Deposition (CVD) growth process. Type IIa