



**ELECTRONIC COPY**

## LABORATORY GROWN DIAMOND REPORT

LG761568788  
Report verification at [igi.org](https://igi.org)

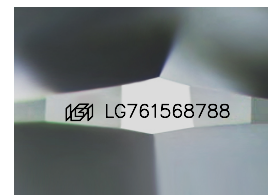
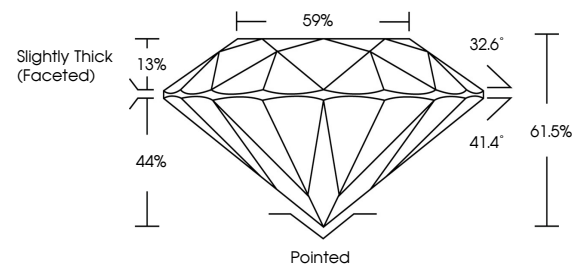
January 2, 2026	
IGI Report Number	LG761568788
Description	LABORATORY GROWN DIAMOND
Shape and Cutting Style	ROUND BRILLIANT
Measurements	8.02 - 8.08 X 4.95 MM
GRADING RESULTS	
Carat Weight	2.00 CARATS
Color Grade	D
Clarity Grade	VVS 2
Cut Grade	EXCELLENT

### ADDITIONAL GRADING INFORMATION

Polish	EXCELLENT
Symmetry	EXCELLENT
Fluorescence	NONE
Inscription(s)	<del>151</del> LG761568788

Comments: This Laboratory Grown Diamond was created by Chemical Vapor Deposition (CVD) growth process.  
Type IIa

## PROPORTIONS



Sample Image Used

## COLOR

D E F G H I J Faint Very Light Light

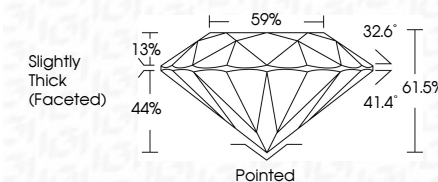
## CLARITY

FL	IF	VVS <sup>1-2</sup>	VS <sup>1-2</sup>	SI <sup>1-2</sup>	I <sup>1-3</sup>
Flawless	Internally Flawless	Very Very Slightly Included	Very Slightly Included	Slightly Included	Included

## LABORATORY GROWN DIAMOND REPORT



January 2, 2026	
IGI Report Number	LG761568788
Description	LABORATORY GROWN DIAMOND
Shape and Cutting Style	ROUND BRILLIANT
Measurements	8.02 - 8.08 X 4.95 MM
GRADING RESULTS	
Carat Weight	2.00 CARATS
Color Grade	D
Clarity Grade	VVS 2
Cut Grade	EXCELLENT



### ADDITIONAL GRADING INFORMATION

Polish	EXCELLENT
Symmetry	EXCELLENT
Fluorescence	NONE
Inscription(s)	 LG761568788
<p>Comments: This Laboratory Grown Diamond was created by Chemical Vapor Deposition (CVD) growth process.</p> <p>Type IIa</p>	



© IGI 2020, International Gemological Institute

FD - 10 20



THIS DOCUMENT WAS PRODUCED WITH THE FOLLOWING SECURITY MEASURES: SPECIAL DOCUMENT PAPER, INK SCREENS, WATERMARK, BACKGROUND DESIGNS, HOLOGRAM AND OTHER SECURITY FEATURES NOT LISTED AND DO EXCEED DOCUMENT SECURITY INDUSTRY GUIDELINES

**www.igi.org**

January 2, 2026  
GI Report No LG761568788  
ROUND BRILLIANT

3.02 - 8.08 X 4.95 MM

3.02 - 6.00 X 4.90 MM	2.00 CARATS
Carat Weight	

Color Grade

Clarity Grade	WS2	EXCELLENT
Out Grade		

Cut Grade	EXCELLENT
Depth	61.5%

Table 59%

Girdle

	Culet	Pointed
1		
2		
3		
4		
5		
6		
7		
8		
9		
10		
11		
12		
13		
14		
15		
16		
17		
18		
19		
20		
21		
22		
23		
24		
25		
26		
27		
28		
29		
30		
31		
32		
33		
34		
35		
36		
37		
38		
39		
40		
41		
42		
43		
44		
45		
46		
47		
48		
49		
50		
51		
52		
53		
54		
55		
56		
57		
58		
59		
60		
61		
62		
63		
64		
65		
66		
67		
68		
69		
70		
71		
72		
73		
74		
75		
76		
77		
78		
79		
80		
81		
82		
83		
84		
85		
86		
87		
88		
89		
90		
91		
92		
93		
94		
95		
96		
97		
98		
99		
100		

Polish	EXCELLENT
Current	Polished

Symmetry	EXCELLENT
Ellipticity	NONE

Fluorescence	None
Inscription(s)	LG761568788

Comments:

**Comments:**  
This Laboratory Grown Diamond was created by Chemical Vapor Deposition

created by Chemical Vapor Deposition (CVD) growth process.

Type IIa