

ELECTRONIC COPY

LABORATORY GROWN DIAMOND REPORT

LG761568392
Report verification at igi.org

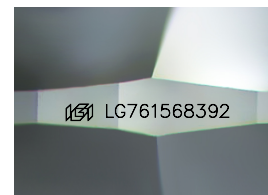
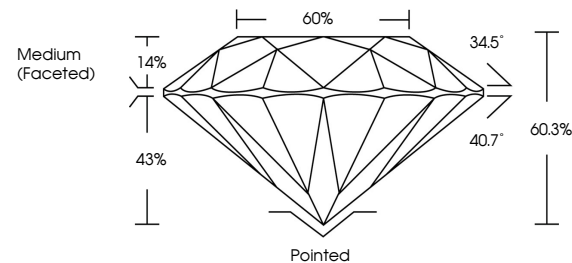
December 31, 2025	
IGI Report Number	LG761568392
Description	LABORATORY GROWN DIAMOND
Shape and Cutting Style	ROUND BRILLIANT
Measurements	7.40 - 7.43 X 4.47 MM
GRADING RESULTS	
Carat Weight	1.51 CARAT
Color Grade	E
Clarity Grade	VS 1
Cut Grade	IDEAL

ADDITIONAL GRADING INFORMATION

Polish	EXCELLENT
Symmetry	EXCELLENT
Fluorescence	NONE
Inscription(s)	 LG761568392

Comments: This Laboratory Grown Diamond was created by Chemical Vapor Deposition (CVD) growth process.
Type IIa

PROPORTIONS



Sample Image Used

COLOR

D E F G H I J Faint Very Light Light

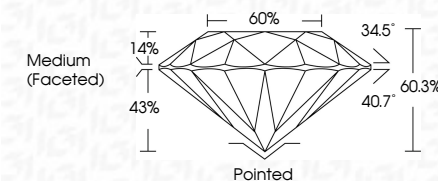
CLARITY

FL	IF	VVS ¹⁻²	VS ¹⁻²	SI ¹⁻²	I ¹⁻³
Flawless	Internally Flawless	Very Very Slightly Included	Very Slightly Included	Slightly Included	Included

LABORATORY GROWN DIAMOND REPORT



December 31, 2025	
IGI Report Number	LG761568392
Description	LABORATORY GROWN DIAMOND
Shape and Cutting Style	ROUND BRILLIANT
Measurements	7.40 - 7.43 X 4.47 MM
GRADING RESULTS	
Carat Weight	1.51 CARAT
Color Grade	E
Clarity Grade	VS 1
Cut Grade	IDEAL



ADDITIONAL GRADING INFORMATION

Polish	EXCELLENT
Symmetry	EXCELLENT
Fluorescence	NONE
Inscription(s)	 LG761568392
<p>Comments: This Laboratory Grown Diamond was created by Chemical Vapor Deposition (CVD) growth process.</p> <p>Type IIa</p>	



December 31, 2025
IGI Report No LG761568392

IGI Report No LG76
POLIND BRILLIANT

ROUND BRILLIANT

1.40 - 1.43 X 4.4/ MM
Carat Weight
1.51 CARAT

Color Grade E

Clarity Grade

Depth	Cut Grade	IDEAL	60 98%
-------	-----------	-------	--------

Table	60%	60.3%
Table		
Table		

Girdle

7
1
2

	Quiet	Pointed
Polish	EXCELLENT	

Symmetry

EXCELLENT

Fluorescence	NONE
Inscription(s)	1881 G761568992

© 2000 Blackwell Science Ltd

Comments:
This Laboratory Grown Diamond was

created by Chemical Vapor Deposition (CVD) growth process.

Type IIa