



LABORATORY GROWN DIAMOND REPORT

December 29, 2025	
IGI Report Number	LG761568178
Description	LABORATORY GROWN DIAMOND
Shape and Cutting Style	ROUND BRILLIANT
Measurements	9.30 - 9.33 x 5.58 mm

GRADING RESULTS

Carat Weight	2.95 CARATSS
Color Grade	D
Clarity Grade	VVS 2
Cut Grade	IDEAL

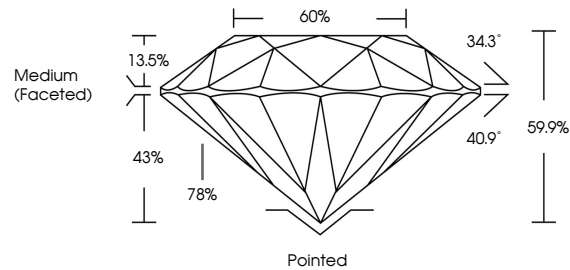
ADDITIONAL GRADING INFORMATION

Polish	EXCELLENT
Symmetry	EXCELLENT
Fluorescence	NONE
Inscription(s)	 LG761568178

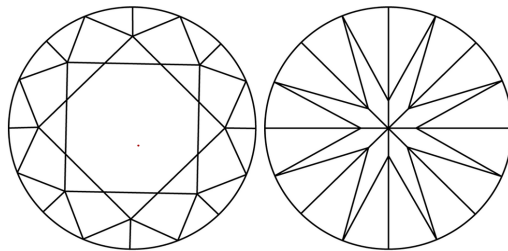
Comments: HEARTS & ARROWS
This Laboratory Grown Diamond was created by
Chemical Vapor Deposition (CVD) growth process.
Type IIa

LG761568178
Report verification at [igi.org](https://www.igi.org)

PROPORTIONS

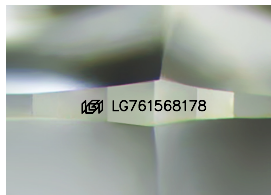


CLARITY CHARACTERISTICS



KEY TO SYMBOLS

Red symbols indicate internal characteristics.
Green symbols indicate external characteristics.

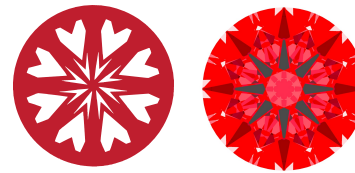


Sample Image Used

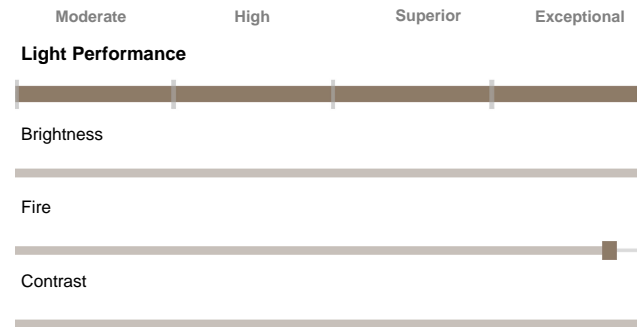
www.igi.org

LIGHT PERFORMANCE REPORT

Light Performance Grade: Exceptional



Structured Light Environment Representation



COLOR

D E F G H I J Faint Very Light Light

CLARITY

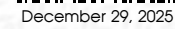
FL	IF	WVS ¹⁻²	VS ¹⁻²	SI ¹⁻²	I ¹⁻³
Flawless	Internally Flawless	Very Very Slightly Included	Very Slightly Included	Slightly Included	Included



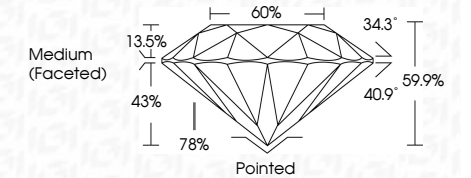
© IGI 2020, International Gemological Institute

FD - 10 20

THIS DOCUMENT WAS PRODUCED WITH THE FOLLOWING SECURITY MEASURES: SPECIAL DOCUMENT PAPER, INK SCREENS, WATERMARK, BACKGROUND DESIGNS, HOLOGRAM AND OTHER SECURITY FEATURES NOT LISTED AND DO EXCEED DOCUMENT SECURITY INDUSTRY GUIDELINE



IGI Report Number	LG761568178
Description	LABORATORY GROWN DIAMOND
Shape and Cutting Style	ROUND BRILLIANT
Measurements	9.30 - 9.33 X 5.58 MM
GRADING RESULTS	
Carat Weight	2.95 CARATS
Color Grade	D
Clarity Grade	VVS 2
Cut Grade	IDEAL



ADDITIONAL GRADING INFORMATION

Polish	EXCELLENT
Symmetry	EXCELLENT
Fluorescence	NONE
Inscription(s)	151 LG761568178

Comments: HEARTS & ARROWS
This Laboratory Grown Diamond was created by
Chemical Vapor Deposition (CVD) growth process.
Type IIa



IGI

December 29, 2025	IGI Report No. LG791568178
ROUND BRILLIANT	
Carat Weight	2.95 CARATS
Color Grade	D
Clarity Grade	VVS 2
Cut Grade	IDEAL
Depth	59.0%
Table	60%
Grade	Medium (Faceted)
Culet	Pointed
Polish	EXCELLENT
Symmetry	EXCELLENT
Fluorescence	NONE
Inscription(s)	IGI LG791568178
Comments:	
<p>HEARTS & ARROWS This Laboratory Grown Diamond was created by Chemical Vapor Deposition (CVD) growth process. Type IIa</p>	