



ELECTRONIC COPY

LG761566600
Report verification at igi.org



December 31, 2025
IGI Report Number **LG761566600**
Description **LABORATORY GROWN DIAMOND**
Shape and Cutting Style **ROUND BRILLIANT**
Measurements **6.85 - 6.93 X 4.22 MM**
GRADING RESULTS
Carat Weight **1.22 CARAT**
Color Grade **D**
Clarity Grade **VS 1**
Cut Grade **IDEAL**

December 31, 2025
IGI Report Number **LG761566600**
Description **LABORATORY GROWN DIAMOND**
Shape and Cutting Style **ROUND BRILLIANT**
Measurements **6.85 - 6.93 X 4.22 MM**

GRADING RESULTS

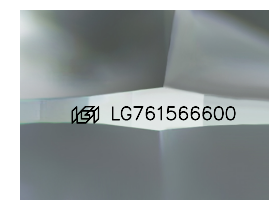
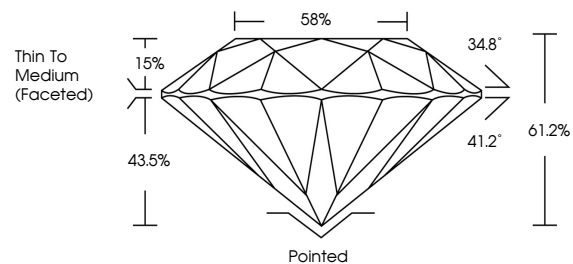
Carat Weight **1.22 CARAT**
Color Grade **D**
Clarity Grade **VS 1**
Cut Grade **IDEAL**

ADDITIONAL GRADING INFORMATION

Polish **EXCELLENT**
Symmetry **VERY GOOD**
Fluorescence **NONE**
Inscription(s) **IGI LG761566600**

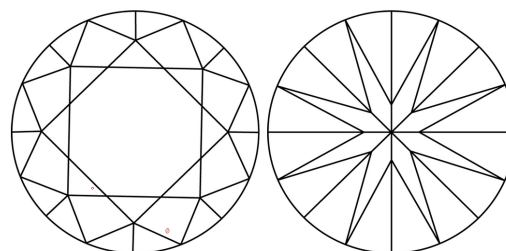
Comments: As Grown - No indication of post-growth treatment.
This Laboratory Grown Diamond was created by High Pressure High Temperature (HPHT) growth process.
Type II

PROPORTIONS



Sample Image Used

CLARITY CHARACTERISTICS



KEY TO SYMBOLS

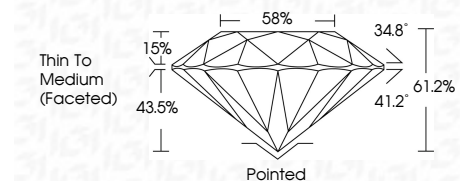
Red symbols indicate internal characteristics.
Green symbols indicate external characteristics.

COLOR

D E F G H I J Faint Very Light Light

CLARITY

FL	IF	VS ¹⁻²	VVS ¹⁻²	S ¹⁻²	I ¹⁻³
Flawless	Internally Flawless	Very Very Slightly Included	Very Slightly Included	Slightly Included	Included



ADDITIONAL GRADING INFORMATION

Polish **EXCELLENT**
Symmetry **VERY GOOD**
Fluorescence **NONE**
Inscription(s) **IGI LG761566600**
Comments: As Grown - No indication of post-growth treatment.
This Laboratory Grown Diamond was created by High Pressure High Temperature (HPHT) growth process.
Type II



IGI



December 31, 2025
IGI Report No LG761566600
ROUND BRILLIANT
6.85 - 6.93 X 4.22 MM
1.22 CARAT
D
VS 1
IDEAL
61.2%
58%
Thin To Medium (Faceted)
Pointed
EXCELLENT
VERY GOOD
NONE
IGI LG761566600
Inscriptions(s)
Comments: As Grown - No indication of post-growth treatment.
This Laboratory Grown Diamond was created by High Pressure High Temperature (HPHT) growth process.
Type II