



ELECTRONIC COPY

LG761566548 Report verification at igi.org



December 30, 2025 IGI Report Number LG761566548 Description LABORATORY GROWN DIAMOND Shape and Cutting Style ROUND BRILLIANT Measurements 6.69 - 6.73 X 4.04 MM GRADING RESULTS Carat Weight 1.12 CARAT Color Grade D Clarity Grade VS 2 Cut Grade EXCELLENT

December 30, 2025 IGI Report Number LG761566548 Description LABORATORY GROWN DIAMOND Shape and Cutting Style ROUND BRILLIANT Measurements 6.69 - 6.73 X 4.04 MM

GRADING RESULTS

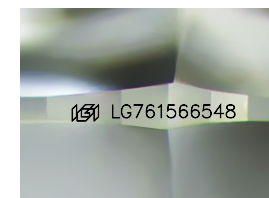
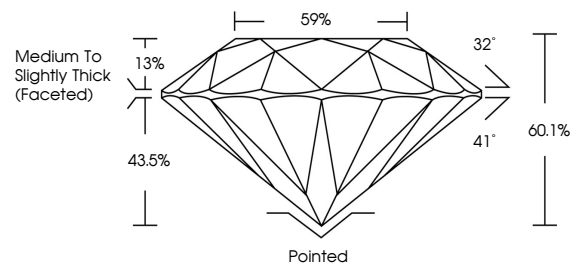
Carat Weight 1.12 CARAT Color Grade D Clarity Grade VS 2 Cut Grade EXCELLENT

ADDITIONAL GRADING INFORMATION

Polish EXCELLENT Symmetry EXCELLENT Fluorescence NONE Inscription(s) IGI LG761566548

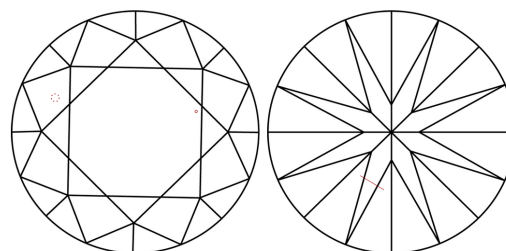
Comments: As Grown - No indication of post-growth treatment. This Laboratory Grown Diamond was created by High Pressure High Temperature (HPHT) growth process. Type II

PROPORTIONS



Sample Image Used

CLARITY CHARACTERISTICS



KEY TO SYMBOLS

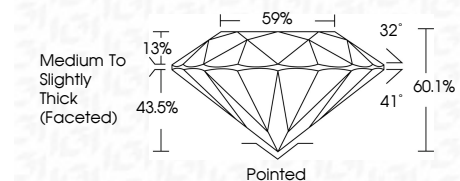
Red symbols indicate internal characteristics. Green symbols indicate external characteristics.

COLOR

D E F G H I J Faint Very Light Light

CLARITY

FL IF VS 1-2 VS 1-2 SI 1-2 I 1-3 Flawless Internally Flawless Very Very Slightly Included Very Slightly Included Slightly Included Included



ADDITIONAL GRADING INFORMATION

Polish EXCELLENT Symmetry EXCELLENT Fluorescence NONE Inscription(s) IGI LG761566548 Comments: As Grown - No indication of post-growth treatment. This Laboratory Grown Diamond was created by High Pressure High Temperature (HPHT) growth process. Type II



December 30, 2025 IGI Report No LG761566548 ROUND BRILLIANT 6.69 - 6.73 X 4.04 MM 1.12 CARAT D VS 2 EXCELLENT 60.1% 59% Medium To Slightly Thick (Faceted) Pointed EXCELLENT EXCELLENT NONE NONE IGI LG761566548 Comments: As Grown - No indication of post-growth treatment. This Laboratory Grown Diamond was created by High Pressure High Temperature (HPHT) growth process. Type II