



ELECTRONIC COPY

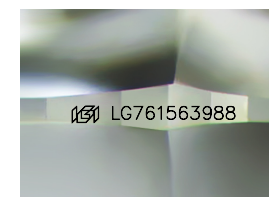
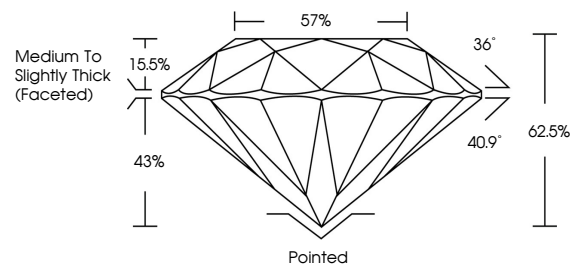
LG761563988
Report verification at igi.org



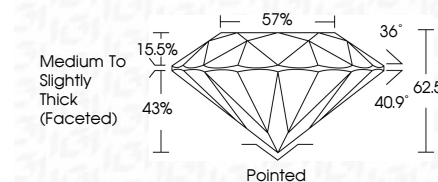
January 7, 2026
IGI Report Number LG761563988
Description LABORATORY GROWN DIAMOND
Shape and Cutting Style ROUND BRILLIANT
Measurements 7.33 - 7.40 X 4.60 MM
GRADING RESULTS
Carat Weight 1.54 CARAT
Color Grade D
Clarity Grade VVS 1
Cut Grade IDEAL

January 7, 2026
IGI Report Number LG761563988
Description LABORATORY GROWN DIAMOND
Shape and Cutting Style ROUND BRILLIANT
Measurements 7.33 - 7.40 X 4.60 MM
GRADING RESULTS
Carat Weight 1.54 CARAT
Color Grade D
Clarity Grade VVS 1
Cut Grade IDEAL

PROPORTIONS



Sample Image Used



ADDITIONAL GRADING INFORMATION

Polish EXCELLENT
Symmetry EXCELLENT
Fluorescence NONE
Inscription(s) IGI LG761563988

Comments: As Grown - No indication of post-growth treatment. This Laboratory Grown Diamond was created by High Pressure High Temperature (HPHT) growth process. Type II

COLOR

D E F G H I J Faint Very Light Light

CLARITY

FL IF VS 1-2 VS 1-2 SI 1-2 I 1-3
Flawless Internally Flawless Very Very Slightly Included Very Slightly Included Slightly Included Included

ADDITIONAL GRADING INFORMATION

Polish EXCELLENT
Symmetry EXCELLENT
Fluorescence NONE
Inscription(s) IGI LG761563988
Comments: As Grown - No indication of post-growth treatment. This Laboratory Grown Diamond was created by High Pressure High Temperature (HPHT) growth process. Type II



IGI



January 7, 2026
IGI Report No LG761563988
ROUND BRILLIANT
7.33 - 7.40 X 4.60 MM
1.54 CARAT
Color Grade D
Clarity Grade VVS 1
Cut Grade IDEAL
Depth 62.5%
Table 57%
Girdle Medium To Slightly Thick (Faceted)
Culet Pointed
Polish EXCELLENT
Symmetry EXCELLENT
Fluorescence NONE
Inscriptions(s) IGI LG761563988
Comments: As Grown - No indication of post-growth treatment. This Laboratory Grown Diamond was created by High Pressure High Temperature (HPHT) growth process. Type II