



ELECTRONIC COPY

LG761557630
Report verification at igi.org



January 29, 2026
IGI Report Number **LG761557630**
Description **LABORATORY GROWN DIAMOND**
Shape and Cutting Style **SQUARE CUSHION MODIFIED BRILLIANT**
Measurements **10.24 X 9.47 X 6.12 MM**
GRADING RESULTS
Carat Weight **5.35 CARATS**
Color Grade **FANCY INTENSE YELLOW BROWN**
Clarity Grade **VVS 2**

LABORATORY GROWN DIAMOND REPORT

January 29, 2026
IGI Report Number **LG761557630**
Description **LABORATORY GROWN DIAMOND**
Shape and Cutting Style **SQUARE CUSHION MODIFIED BRILLIANT**
Measurements **10.24 X 9.47 X 6.12 MM**

GRADING RESULTS

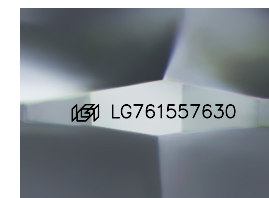
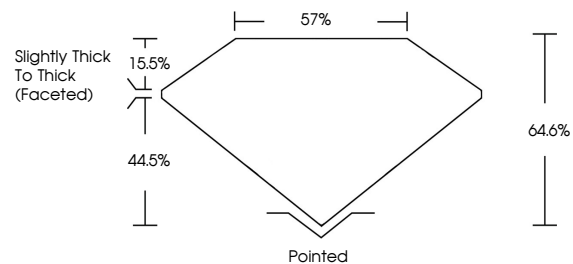
Carat Weight **5.35 CARATS**
Color Grade **FANCY INTENSE YELLOW BROWN**
Clarity Grade **VVS 2**

ADDITIONAL GRADING INFORMATION

Polish **EXCELLENT**
Symmetry **EXCELLENT**
Fluorescence **NONE**
Inscription(s) **(IGI) LG761557630**

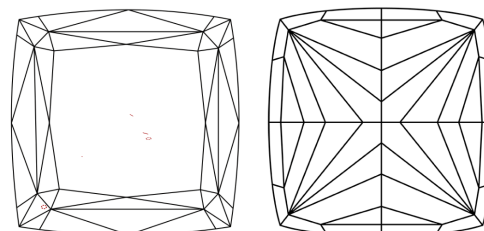
Comments: This Laboratory Grown Diamond was created by Chemical Vapor Deposition (CVD) growth process.

PROPORTIONS



Sample Image Used

CLARITY CHARACTERISTICS



KEY TO SYMBOLS

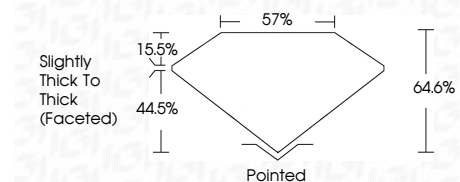
Red symbols indicate internal characteristics.
Green symbols indicate external characteristics.

COLOR

D E F G H I J Faint Very Light Light

CLARITY

FL	IF	VVS ¹⁻²	VS ¹⁻²	SI ¹⁻²	I ¹⁻³
Flawless	Internally Flawless	Very Very Slightly Included	Very Slightly Included	Slightly Included	Included



ADDITIONAL GRADING INFORMATION

Polish **EXCELLENT**
Symmetry **EXCELLENT**
Fluorescence **NONE**
Inscription(s) **(IGI) LG761557630**
Comments: This Laboratory Grown Diamond was created by Chemical Vapor Deposition (CVD) growth process.



January 29, 2026
IGI Report No LG761557630
SQUARE CUSHION MODIFIED BRILLIANT
10.24 X 9.47 X 6.12 MM
5.35 CARATS
FANCY INTENSE YELLOW BROWN
VVS 2
64.6%
67%
Slightly Thick To Thick (Faceted)
Pointed
EXCELLENT
EXCELLENT
NONE
(IGI) LG761557630
Comments: This Laboratory Grown Diamond was created by Chemical Vapor Deposition (CVD) growth process.