



ELECTRONIC COPY

LG761554831
Report verification at igi.org



February 2, 2026

IGI Report Number LG761554831

Description LABORATORY GROWN DIAMOND

Shape and Cutting Style ROUND BRILLIANT

Measurements 6.36 - 6.40 X 3.94 MM

GRADING RESULTS

Carat Weight 1.00 CARAT

Color Grade D

Clarity Grade INTERNALLY FLAWLESS

Cut Grade IDEAL

February 2, 2026

IGI Report Number LG761554831

Description LABORATORY GROWN DIAMOND

Shape and Cutting Style ROUND BRILLIANT

Measurements 6.36 - 6.40 X 3.94 MM

GRADING RESULTS

Carat Weight 1.00 CARAT

Color Grade D

Clarity Grade INTERNALLY FLAWLESS

Cut Grade IDEAL

ADDITIONAL GRADING INFORMATION

Polish EXCELLENT

Symmetry EXCELLENT

Fluorescence NONE

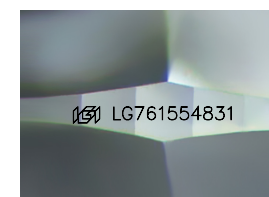
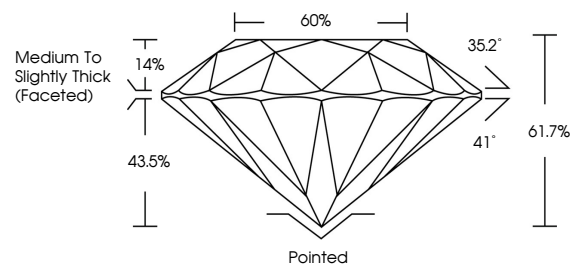
Inscription(s) IGI LG761554831

Comments: As Grown - No indication of post-growth treatment.

This Laboratory Grown Diamond was created by High Pressure High Temperature (HPHT) growth process.

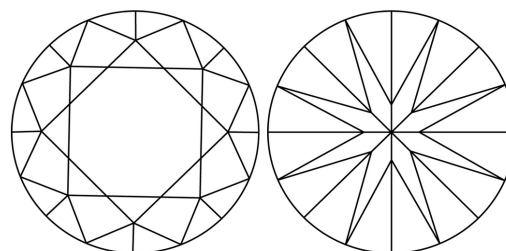
Type II

PROPORTIONS



Sample Image Used

CLARITY CHARACTERISTICS



KEY TO SYMBOLS

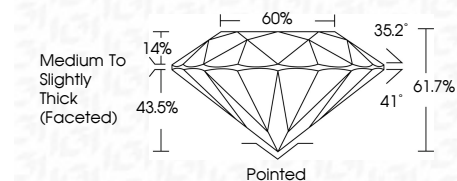
Red symbols indicate internal characteristics. Green symbols indicate external characteristics.

COLOR

D E F G H I J Faint Very Light Light

CLARITY

FL IF VS 1-2 VS 1-2 SI 1-2 I 1-3
Flawless Internally Flawless Very Very Slightly Included Very Slightly Included Slightly Included Included



ADDITIONAL GRADING INFORMATION

Polish EXCELLENT

Symmetry EXCELLENT

Fluorescence NONE

Inscription(s) IGI LG761554831

Comments: As Grown - No indication of post-growth treatment.

This Laboratory Grown Diamond was created by High Pressure High Temperature (HPHT) growth process.

Type II



IGI



Summary table of report details including Date, Report No, Shape, Measurements, Carat Weight, Color Grade, Clarity Grade, Depth, Table, Grade, Cut, Polish, Symmetry, Fluorescence, and Inscription(s).