



ELECTRONIC COPY

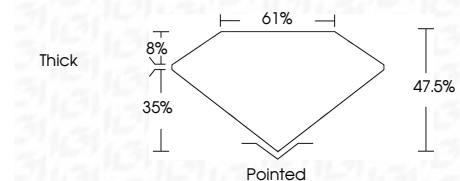
LG761554284
Report verification at igi.org



February 13, 2026
IGI Report Number **LG761554284**
Description **LABORATORY GROWN DIAMOND**
Shape and Cutting Style **TRIANGULAR MIXED CUT**
Measurements **7.20 X 8.24 X 3.91 MM**

GRADING RESULTS

Carat Weight **1.02 CARAT**
Color Grade **D**
Clarity Grade **VVS 2**



ADDITIONAL GRADING INFORMATION

Polish **EXCELLENT**
Symmetry **EXCELLENT**
Fluorescence **NONE**
Inscription(s) **(IGI) LG761554284**
Comments: This Laboratory Grown Diamond was created by Chemical Vapor Deposition (CVD) growth process. Type IIa



February 13, 2026
IGI Report No LG761554284
TRIANGULAR MIXED CUT
7.20 X 8.24 X 3.91 MM
1.02 CARAT
D
VVS 2
47.5%
61%
Thick
Pointed
EXCELLENT
EXCELLENT
NONE
(IGI) LG761554284
Comments: This Laboratory Grown Diamond was created by Chemical Vapor Deposition (CVD) growth process. Type IIa

LABORATORY GROWN DIAMOND REPORT

February 13, 2026
IGI Report Number **LG761554284**
Description **LABORATORY GROWN DIAMOND**
Shape and Cutting Style **TRIANGULAR MIXED CUT**
Measurements **7.20 X 8.24 X 3.91 MM**

GRADING RESULTS

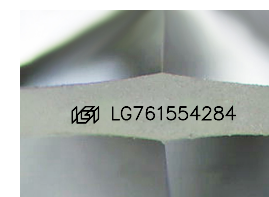
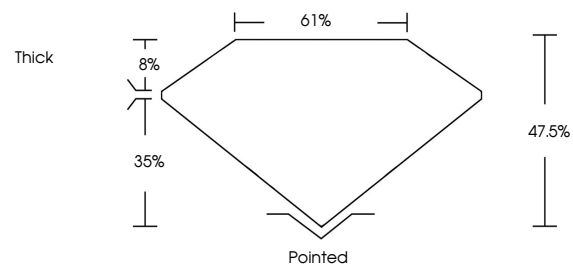
Carat Weight **1.02 CARAT**
Color Grade **D**
Clarity Grade **VVS 2**

ADDITIONAL GRADING INFORMATION

Polish **EXCELLENT**
Symmetry **EXCELLENT**
Fluorescence **NONE**
Inscription(s) **(IGI) LG761554284**

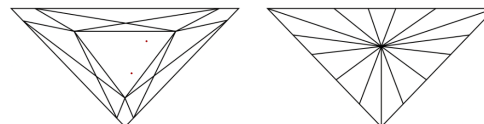
Comments: This Laboratory Grown Diamond was created by Chemical Vapor Deposition (CVD) growth process. Type IIa

PROPORTIONS



Sample Image Used

CLARITY CHARACTERISTICS



KEY TO SYMBOLS

Red symbols indicate internal characteristics.
Green symbols indicate external characteristics.

COLOR

D E F G H I J Faint Very Light Light

CLARITY

FL	IF	VVS ¹⁻²	VS ¹⁻²	SI ¹⁻²	I ¹⁻³
Flawless	Internally Flawless	Very Very Slightly Included	Very Slightly Included	Slightly Included	Included

