



ELECTRONIC COPY

LABORATORY GROWN DIAMOND REPORT

February 5, 2026	
IGI Report Number	LG761552651
Description	LABORATORY GROWN DIAMOND
Shape and Cutting Style	ROUND BRILLIANT
Measurements	6.38 - 6.42 X 3.93 MM

GRADING RESULTS

Carat Weight	1.00 CARAT
Color Grade	D
Clarity Grade	VVS 2
Cut Grade	IDEAL

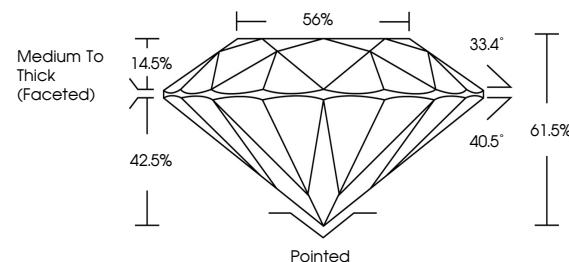
ADDITIONAL GRADING INFORMATION

Polish	EXCELLENT
Symmetry	EXCELLENT
Fluorescence	NONE
Inscription(s)	15 LG761552651

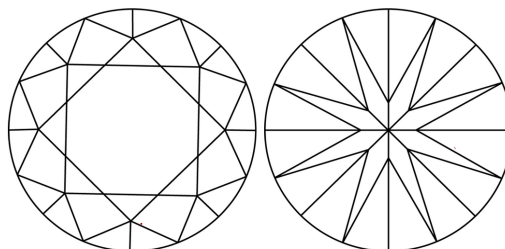
Comments: As Grown - No indication of post-growth treatment.
This Laboratory Grown Diamond was created by High Pressure High Temperature (HPHT) growth process.
Type II

LG761552651
Report verification at lgi.org

PROPORTIONS

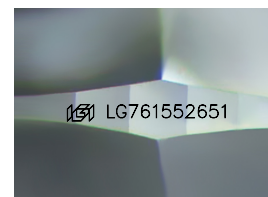


CLARITY CHARACTERISTICS



KEY TO SYMBOLS

Red symbols indicate internal characteristics.
Green symbols indicate external characteristics.



Sample Image Used

COLOR

D E F G H I J Faint Very Light Light

CLARITY

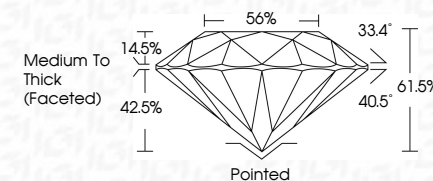
FL	IF	VVS ¹⁻²	VS ¹⁻²	SI ¹⁻²	I ¹⁻³
Flawless	Internally Flawless	Very Very Slightly Included	Very Slightly Included	Slightly Included	Included



February 5, 2026	
IGI Report Number	LG761552651
Description	LABORATORY GROWN DIAMOND
Shape and Cutting Style	ROUND BRILLIANT
Measurements	6.38 - 6.42 X 3.93 MM

GRADING RESULTS

Carat Weight	1.00 CARAT
Color Grade	D
Clarity Grade	VVS 2
Cut Grade	IDEAL



ADDITIONAL GRADING INFORMATION

Polish	EXCELLENT
Symmetry	EXCELLENT
Fluorescence	NONE
Inscription(s)	LG LG761552651
<p>Comments: As Grown - No indication of post-growth treatment.</p> <p>This Laboratory Grown Diamond was created by High Pressure High Temperature (HPHT) growth process.</p> <p>Type II</p>	



IG



© IGI 2020, International Gemological Institute

FD - 10 20



THIS DOCUMENT WAS PRODUCED WITH THE FOLLOWING SECURITY MEASURES: SPECIAL DOCUMENT PAPER, INK SCREENS, WATERMARK, BACKGROUND DESIGNS, HOLOGRAM AND OTHER SECURITY FEATURES NOT LISTED AND DO EXCEED DOCUMENT SECURITY INDUSTRY GUIDELINE

www.igi.org

February 5, 2026	Carat Weight	1.00 CARAT
GI Report No LG761562651	Color Grade	D
ROUND BRILLIANT	Clarity Grade	VVS 2
3.98 - 4.02 X 3.93 MM	Cut Grade	IDEAL
	Depth	61.5%
	Table	55%
	Girdle	Medium to Thick (Faceted)
	Culet	Pointed
	Polish	EXCELLENT
	Symmetry	EXCELLENT
	Fluorescence	NONE
	Inscriptions	gfp LG761562651

Comments:

As Grown - No indication of post-growth treatment. Secondary Growth Diamond was created by High Pressure High Temperature (HPHT) growth process.

Comments:
As Grown - No Indication of post-growth treatment
This Laboratory Grown Diamond was created by High Pressure High Temperature (HPHT) growth process.