



**ELECTRONIC COPY**

## LABORATORY GROWN DIAMOND REPORT

January 31, 2026	
IGI Report Number	LG761552606
Description	LABORATORY GROWN DIAMOND
Shape and Cutting Style	ROUND BRILLIANT
Measurements	6.45 - 6.48 X 3.92 MM

## GRADING RESULTS

Carat Weight	1.02 CARAT
Color Grade	D
Clarity Grade	VS 1
Cut Grade	IDEAL

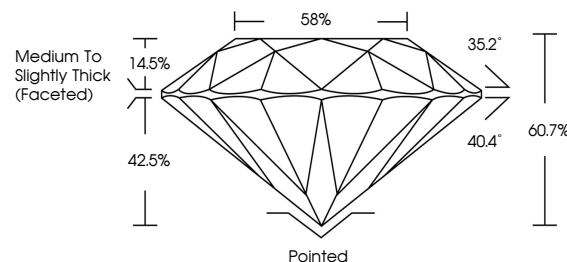
### ADDITIONAL GRADING INFORMATION

Polish	EXCELLENT
Symmetry	EXCELLENT
Fluorescence	NONE
Inscription(s)	LG761552606

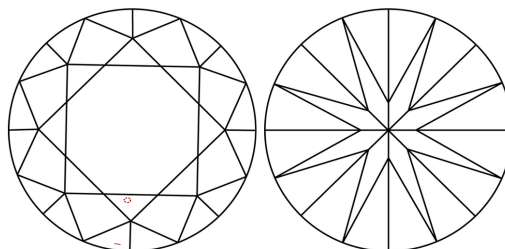
Comments: As Grown - No indication of post-growth treatment.  
This Laboratory Grown Diamond was created by High Pressure High Temperature (HPHT) growth process.  
Type II

LG761552606  
Report verification at [lgi.org](https://lgi.org)

## PROPORTIONS

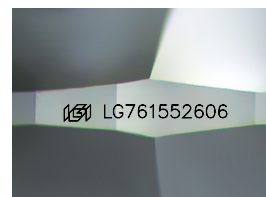


## CLARITY CHARACTERISTICS



## KEY TO SYMBOLS

Red symbols indicate internal characteristics.  
Green symbols indicate external characteristics.



Sample Image Used

## COLOR

D E F G H I J Faint Very Light Light

## CLARITY

FL	IF	VVS <sup>1-2</sup>	VS <sup>1-2</sup>	SI <sup>1-2</sup>	I <sup>1-3</sup>
Flawless	Internally Flawless	Very Very Slightly Included	Very Slightly Included	Slightly Included	Included

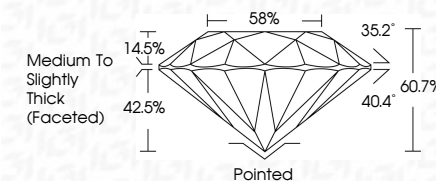
## LABORATORY GROWN DIAMOND REPORT



January 31, 2026	
IGI Report Number	LG761552606
Description	LABORATORY GROWN DIAMOND
Shape and Cutting Style	ROUND BRILLIANT
Measurements	6.45 - 6.48 X 3.92 MM

## GRADING RESULTS

Carat Weight	1.02 CARAT
Color Grade	D
Clarity Grade	VS 1
Cut Grade	IDEAL



### ADDITIONAL GRADING INFORMATION

Polish	EXCELLENT
Symmetry	EXCELLENT
Fluorescence	NONE
Inscription(s)	<del>(G)</del> LG761552606
Comments: As Grown - No indication of post-growth treatment.	
This Laboratory Grown Diamond was created by High Pressure High Temperature (HPHT) growth process.	
Type II	



© IGI 2020, International Gemological Institute

FD - 10 20



THIS DOCUMENT WAS PRODUCED WITH THE FOLLOWING SECURITY MEASURES: SPECIAL DOCUMENT PAPER, INK SCREENS, WATERMARK, BACKGROUND DESIGNS, HOLOGRAM AND OTHER SECURITY FEATURES NOT LISTED AND DO EXCEED DOCUMENT SECURITY INDUSTRY GUIDELINES

**www.igi.org**

<b>GRI Report No. LG701552905</b>					
<b>ROUND BRILLIANT</b>					
<b>January 31, 2026</b>	<b>Carat Weight</b>	<b>Color Grade</b>	<b>Cutty Grade</b>	<b>Vs I</b>	<b>1.02 CARAT</b>
<b>D</b>	<b>Color Grade</b>	<b>Cut Grade</b>	<b>Depth</b>	<b>IDEAL</b>	
<b>VS 1</b>	<b>Color Grade</b>	<b>Cut Grade</b>	<b>Table</b>	<b>60.7%</b>	
<b>58%</b>	<b>Color Grade</b>	<b>Cut Grade</b>	<b>Girdle</b>	<b>Medium to Slightly Thick Faceted</b>	
<b>Poined</b>	<b>Culet</b>	<b>Symmetry</b>	<b>Fluorescence</b>	<b>EXCELLENT</b>	
<b>EXCELLENT</b>	<b>Polish</b>	<b>Inscription(s)</b>	<b>None</b>	<b>NONE</b>	
<b>LG701552905</b>					

Comments:  
As Grown - No indication of post-growth treatment.  
This Laboratory Grown Diamond was created by High Pressure High Temperature (HPHT) growth process.