

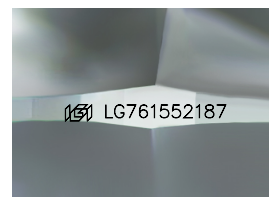
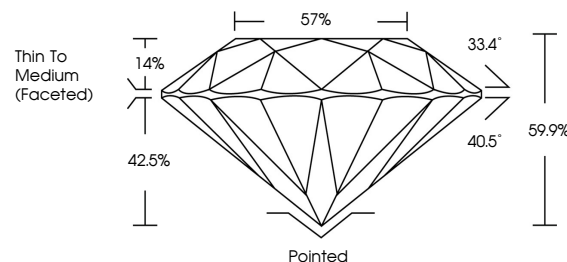


**ELECTRONIC COPY**

## LABORATORY GROWN DIAMOND REPORT

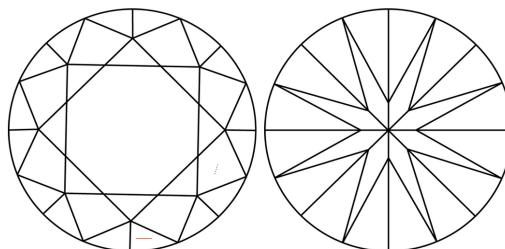
LG761552187  
Report verification at [lgi.org](https://lgi.org)

## PROPORTIONS



Sample Image Used

## CLARITY CHARACTERISTICS



## KEY TO SYMBOLS

Red symbols indicate internal characteristics.  
Green symbols indicate external characteristics.

## COLOR

D E F G H I J Faint Very Light Light

## CLARITY

FL	IF	VVS <sup>1-2</sup>	VS <sup>1-2</sup>	SI <sup>1-2</sup>	I <sup>1-3</sup>
Flawless	Internally Flawless	Very Very Slightly Included	Very Slightly Included	Slightly Included	Included

## LABORATORY GROWN DIAMOND REPORT



January 23, 2026

IGI Report Number **LG761552187**Description **LABORATORY GROWN DIAMOND**Shape and Cutting Style **ROUND BRILLIANT**

Measurements	6.50 - 6.54 X 3.90 MM
--------------	-----------------------

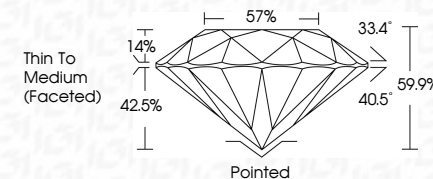
## GRADING RESULTS

Carat Weight **1.01 CARAT**

Color Grade	D
-------------	---

Clarity Grade VS 1

Cut Grade **IDEAL**



### ADDITIONAL GRADING INFORMATION

Polish **EXCELLENT**Symmetry **EXCELLENT**Fluorescence **NONE**Inscription(s)  LG761552187

Comments: As Grown - No indication of post-growth treatment.

This Laboratory Grown Diamond was created by High Pressure High Temperature (HPHT) growth process.

Type II



© IGI 2020, International Gemological Institute

FD - 10 20

**www.igi.org**

January 23, 2026	1.01 CARAT
GR Report No. LG761552187	VSI
ROUND BRILLIANT	IDEAL
	59.9%
	57%
	Thin To Medium
	(Faceview)
	Pointed
	EXCELLENT
	EXCELLENT
	NONE
	681 LG761552187

Comments: As Grown - No indication of post-growth treatment.

This Laboratory Grown Diamond was created by High Pressure High Temperature (HPHT) growth process.