



ELECTRONIC COPY

LG761551588
Report verification at igi.org



January 22, 2026
IGI Report Number **LG761551588**
Description **LABORATORY GROWN DIAMOND**
Shape and Cutting Style **ROUND BRILLIANT**
Measurements **7.11 - 7.15 X 4.36 MM**
GRADING RESULTS
Carat Weight **1.36 CARAT**
Color Grade **G**
Clarity Grade **VS 1**
Cut Grade **IDEAL**

January 22, 2026
IGI Report Number **LG761551588**
Description **LABORATORY GROWN DIAMOND**
Shape and Cutting Style **ROUND BRILLIANT**
Measurements **7.11 - 7.15 X 4.36 MM**

GRADING RESULTS

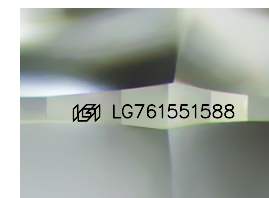
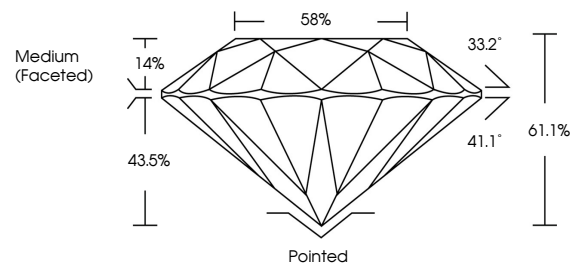
Carat Weight **1.36 CARAT**
Color Grade **G**
Clarity Grade **VS 1**
Cut Grade **IDEAL**

ADDITIONAL GRADING INFORMATION

Polish **EXCELLENT**
Symmetry **EXCELLENT**
Fluorescence **NONE**
Inscription(s) **IGI LG761551588**

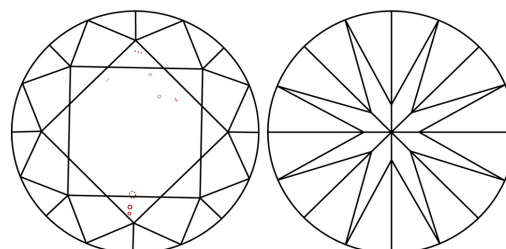
Comments: This Laboratory Grown Diamond was created by Chemical Vapor Deposition (CVD) growth process.
Type IIa

PROPORTIONS



Sample Image Used

CLARITY CHARACTERISTICS



KEY TO SYMBOLS

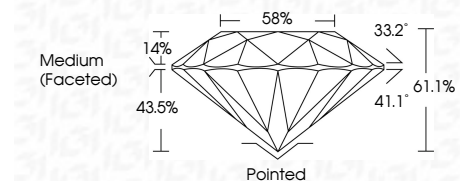
Red symbols indicate internal characteristics.
Green symbols indicate external characteristics.

COLOR

D E F G H I J Faint Very Light Light

CLARITY

| FL | IF | VS ¹⁻² | VS ¹⁻² | SI ¹⁻² | I ¹⁻³ |
|----------|---------------------|-----------------------------|------------------------|-------------------|------------------|
| Flawless | Internally Flawless | Very Very Slightly Included | Very Slightly Included | Slightly Included | Included |



ADDITIONAL GRADING INFORMATION

Polish **EXCELLENT**
Symmetry **EXCELLENT**
Fluorescence **NONE**
Inscription(s) **IGI LG761551588**
Comments: This Laboratory Grown Diamond was created by Chemical Vapor Deposition (CVD) growth process.
Type IIa



January 22, 2026
IGI Report No LG761551588
ROUND BRILLIANT
7.11 - 7.15 X 4.36 MM
1.36 CARAT
Color Grade G
Clarity Grade VS 1
Depth 43.5%
Table 14%
Crown Angle 33.2°
Pavilion Angle 41.1%
Ratio 58%
Medium (Faceted)
Cutler Pointed
Polish EXCELLENT
Symmetry EXCELLENT
Fluorescence NONE
Inscriptions(s) IGI LG761551588
Comments: This Laboratory Grown Diamond was created by Chemical Vapor Deposition (CVD) growth process.
Type IIa