



ELECTRONIC COPY

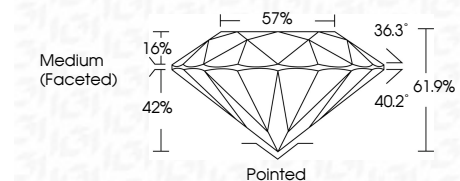
LG761550249
Report verification at igi.org



January 22, 2026
IGI Report Number **LG761550249**
Description **LABORATORY GROWN DIAMOND**
Shape and Cutting Style **ROUND BRILLIANT**
Measurements **9.16 - 9.22 X 5.68 MM**

GRADING RESULTS

Carat Weight **3.00 CARATS**
Color Grade **FANCY PINK**
Clarity Grade **VVS 2**
Cut Grade **EXCELLENT**



ADDITIONAL GRADING INFORMATION

Polish **EXCELLENT**
Symmetry **EXCELLENT**
Fluorescence **SLIGHT**
Inscription(s) **IGI LG761550249**
Comments: This Laboratory Grown Diamond was created by Chemical Vapor Deposition (CVD) growth process. Indications of post-growth treatment.



January 22, 2026
IGI Report No LG761550249
ROUND BRILLIANT
3.00 CARATS
FANCY PINK
VVS 2
EXCELLENT
61.9%
57%
Medium (Faceted)
Pointed
EXCELLENT
EXCELLENT
SLIGHT
IGI LG761550249
Comments: This Laboratory Grown Diamond was created by Chemical Vapor Deposition (CVD) growth process. Indications of post-growth treatment.

January 22, 2026
IGI Report Number **LG761550249**
Description **LABORATORY GROWN DIAMOND**
Shape and Cutting Style **ROUND BRILLIANT**
Measurements **9.16 - 9.22 X 5.68 MM**

GRADING RESULTS

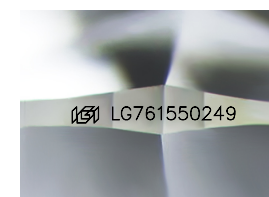
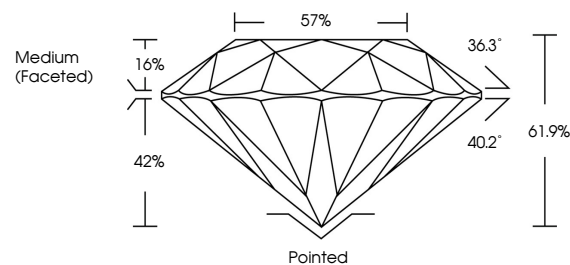
Carat Weight **3.00 CARATS**
Color Grade **FANCY PINK**
Clarity Grade **VVS 2**
Cut Grade **EXCELLENT**

ADDITIONAL GRADING INFORMATION

Polish **EXCELLENT**
Symmetry **EXCELLENT**
Fluorescence **SLIGHT**
Inscription(s) **IGI LG761550249**

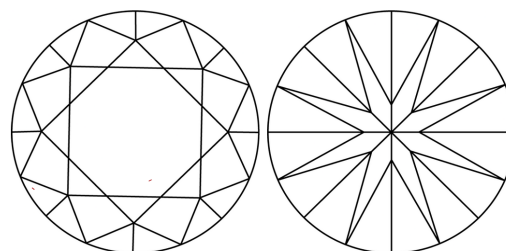
Comments: This Laboratory Grown Diamond was created by Chemical Vapor Deposition (CVD) growth process. Indications of post-growth treatment.

PROPORTIONS



Sample Image Used

CLARITY CHARACTERISTICS



KEY TO SYMBOLS

Red symbols indicate internal characteristics.
Green symbols indicate external characteristics.

COLOR

D E F G H I J Faint Very Light Light

CLARITY

FL	IF	VVS ¹⁻²	VS ¹⁻²	SI ¹⁻²	I ¹⁻³
Flawless	Internally Flawless	Very Very Slightly Included	Very Slightly Included	Slightly Included	Included

