



ELECTRONIC COPY

LABORATORY GROWN DIAMOND REPORT

LG761550080
Report verification at igi.org

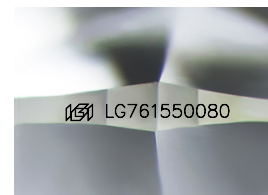
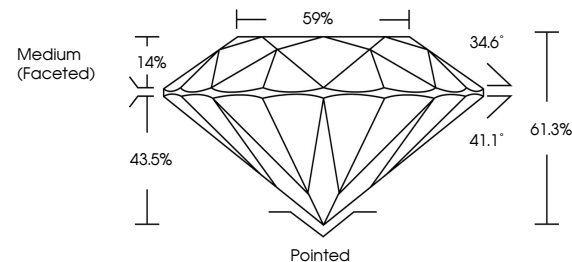
January 7, 2026	
IGI Report Number	LG761550080
Description	LABORATORY GROWN DIAMOND
Shape and Cutting Style	ROUND BRILLIANT
Measurements	6.43 - 6.45 X 3.95 MM
GRADING RESULTS	
Carat Weight	1.01 CARAT
Color Grade	E
Clarity Grade	VVS 2
Cut Grade	IDEAL

ADDITIONAL GRADING INFORMATION

Polish	EXCELLENT
Symmetry	EXCELLENT
Fluorescence	NONE
Inscription(s)	15 LG761550080

Comments: As Grown - No indication of post-growth treatment.
This Laboratory Grown Diamond was created by High Pressure High Temperature (HPHT) growth process.
Type II

PROPORTIONS



Sample Image Used

COLOR

D E F G H I J Faint Very Light Light

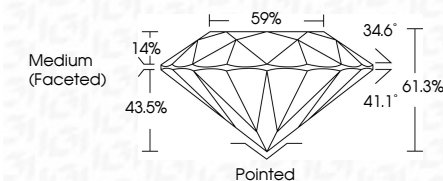
CLARITY

FL	IF	VVS ¹⁻²	VS ¹⁻²	SI ¹⁻²	I ¹⁻³
Flawless	Internally Flawless	Very Very Slightly Included	Very Slightly Included	Slightly Included	Included


LABORATORY GROWN DIAMOND REPORT



January 7, 2026	
IGI Report Number	LG761550080
Description	LABORATORY GROWN DIAMOND
Shape and Cutting Style	ROUND BRILLIANT
Measurements	6.43 - 6.45 X 3.95 MM
GRADING RESULTS	
Carat Weight	1.01 CARAT
Color Grade	E
Clarity Grade	VVS 2
Cut Grade	IDEAL



ADDITIONAL GRADING INFORMATION

Polish	EXCELLENT
Symmetry	EXCELLENT
Fluorescence	NONE
Inscription(s)	 LG761550080
Comments: As Grown - No indication of post-growth treatment.	
This Laboratory Grown Diamond was created by High Pressure High Temperature (HPHT) growth process.	
Type II	



© IGI 2020, International Gemological Institute

FD - 10 20



THIS DOCUMENT WAS PRODUCED WITH THE FOLLOWING SECURITY MEASURES: SPECIAL DOCUMENT PAPER, INK SCREENS, WATERMARK, BACKGROUND DESIGNS, HOLOGRAM AND OTHER SECURITY FEATURES NOT LISTED AND DO EXCEED DOCUMENT SECURITY INDUSTRY GUIDELINES

www.igi.org

January 7, 2026
GI Report No 167

IGI Report No LG76

ROUND BRILLIANT
6.43 - 6.45 V 3.95 MM

5.43 - 6.46 X 3.96 MM
Carat Weight 1.01 CARAT

Color Grade E

Clarity Grade	WS 2
Very Good	100%
Good	100%
Fair	100%
Poor	100%
Very Poor	100%

Cut Grade	IDEAL
Depth	61.3%

Dep III	61.3%
Table	59%

Girdle

Country	Year	Population (millions)	Urban population (millions)	Urban population (%)	Population density (per sq km)	Population density (per sq mile)
Algeria	1990	10.5	5.5	52.4	102	264
Algeria	2000	12.5	7.5	60.0	125	324
Algeria	2010	14.5	9.5	65.5	145	375
Algeria	2020	16.5	11.5	69.7	165	425
Algeria	2030	18.5	13.5	72.9	185	478
Algeria	2040	20.5	15.5	75.6	205	531
Algeria	2050	22.5	17.5	77.8	225	583
Algeria	2060	24.5	19.5	79.6	245	634
Algeria	2070	26.5	21.5	81.1	265	686
Algeria	2080	28.5	23.5	82.5	285	737
Algeria	2090	30.5	25.5	83.6	305	788
Algeria	2100	32.5	27.5	84.6	325	840
Algeria	2110	34.5	29.5	85.5	345	891
Algeria	2120	36.5	31.5	86.3	365	942
Algeria	2130	38.5	33.5	87.0	385	993
Algeria	2140	40.5	35.5	87.7	405	1,044
Algeria	2150	42.5	37.5	88.2	425	1,095
Algeria	2160	44.5	39.5	88.8	445	1,146
Algeria	2170	46.5	41.5	89.2	465	1,197
Algeria	2180	48.5	43.5	89.7	485	1,248
Algeria	2190	50.5	45.5	90.1	505	1,299
Algeria	2200	52.5	47.5	90.5	525	1,350
Algeria	2210	54.5	49.5	90.8	545	1,401
Algeria	2220	56.5	51.5	91.2	565	1,452
Algeria	2230	58.5	53.5	91.5	585	1,503
Algeria	2240	60.5	55.5	91.8	605	1,554
Algeria	2250	62.5	57.5	92.0	625	1,605
Algeria	2260	64.5	59.5	92.2	645	1,656
Algeria	2270	66.5	61.5	92.5	665	1,707
Algeria	2280	68.5	63.5	92.7	685	1,758
Algeria	2290	70.5	65.5	92.9	705	1,809
Algeria	2300	72.5	67.5	93.1	725	1,860
Algeria	2310	74.5	69.5	93.3	745	1,911
Algeria	2320	76.5	71.5	93.5	765	1,962
Algeria	2330	78.5	73.5	93.6	785	2,013
Algeria	2340	80.5	75.5	93.8	805	2,064
Algeria	2350	82.5	77.5	93.9	825	2,115
Algeria	2360	84.5	79.5	94.1	845	2,166
Algeria	2370	86.5	81.5	94.2	865	2,217
Algeria	2380	88.5	83.5	94.3	885	2,268
Algeria	2390	90.5	85.5	94.5	905	2,319
Algeria	2400	92.5	87.5	94.6	925	2,370
Algeria	2410	94.5	89.5	94.7	945	2,421
Algeria	2420	96.5	91.5	94.8	965	2,472
Algeria	2430	98.5	93.5	94.9	985	2,523
Algeria	2440	100.5	95.5	95.0	1,005	2,574
Algeria	2450	102.5	97.5	95.1	1,025	2,625
Algeria	2460	104.5	99.5	95.2	1,045	2,676
Algeria	2470	106.5	101.5	95.3	1,065	2,727
Algeria	2480	108.5	103.5	95.4	1,085	2,778
Algeria	2490	110.5	105.5	95.5	1,105	2,829
Algeria	2500	112.5	107.5	95.6	1,125	2,880
Algeria	2510	114.5	109.5	95.7	1,145	

	Polish	Curel	Pointed
EXCELLENT			

Symmetry

Fluorescence	NONE
Inscription(s)	150 LG761550080

(A) *nonfluorinated*

Comments:
As Grown - No Indication of post-growth

treatment.
This Laboratory Grown Diamond was

created by High Pressure High Temperature (HPHT) growth process.

Type II