



ELECTRONIC COPY

LG761549220
Report verification at igi.org



January 5, 2026
IGI Report Number LG761549220
Description LABORATORY GROWN DIAMOND
Shape and Cutting Style ROUND BRILLIANT
Measurements 7.33 - 7.39 X 4.55 MM
GRADING RESULTS
Carat Weight 1.52 CARAT
Color Grade E
Clarity Grade INTERNALLY FLAWLESS
Cut Grade IDEAL

January 5, 2026
IGI Report Number LG761549220
Description LABORATORY GROWN DIAMOND
Shape and Cutting Style ROUND BRILLIANT
Measurements 7.33 - 7.39 X 4.55 MM

GRADING RESULTS

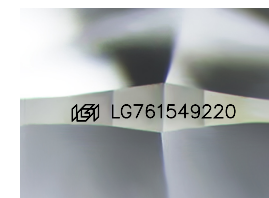
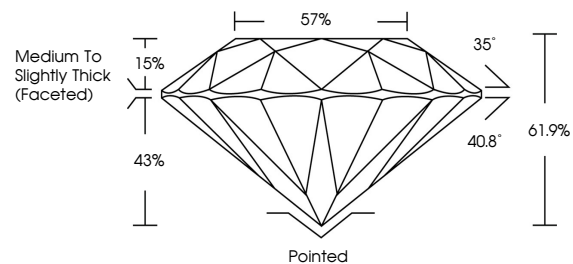
Carat Weight 1.52 CARAT
Color Grade E
Clarity Grade INTERNALLY FLAWLESS
Cut Grade IDEAL

ADDITIONAL GRADING INFORMATION

Polish EXCELLENT
Symmetry EXCELLENT
Fluorescence NONE
Inscription(s) LG761549220

Comments: HEARTS & ARROWS
As Grown - No indication of post-growth treatment.
This Laboratory Grown Diamond was created by High Pressure High Temperature (HPHT) growth process.
Type II

PROPORTIONS



Sample Image Used

CLARITY CHARACTERISTICS



KEY TO SYMBOLS

Red symbols indicate internal characteristics.
Green symbols indicate external characteristics.

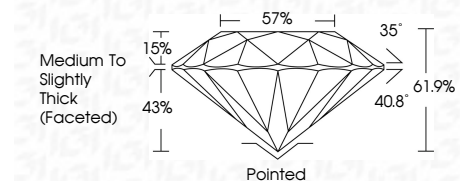


COLOR

D E F G H I J Faint Very Light Light

CLARITY

FL IF VS 1-2 VS 1-2 SI 1-2 I 1-3
Flawless Internally Flawless Very Very Slightly Included Very Slightly Included Slightly Included Included



ADDITIONAL GRADING INFORMATION

Polish EXCELLENT
Symmetry EXCELLENT
Fluorescence NONE
Inscription(s) LG761549220
Comments: HEARTS & ARROWS
As Grown - No indication of post-growth treatment.
This Laboratory Grown Diamond was created by High Pressure High Temperature (HPHT) growth process.
Type II



January 5, 2026
IGI Report No LG761549220
ROUND BRILLIANT
7.33 - 7.39 X 4.55 MM
1.52 CARAT
E
Color Grade
Clarity Grade IF
Depth 61.9%
Table 57%
Medium To Slightly Thick (Faceted)
Pointed
Polish EXCELLENT
Symmetry EXCELLENT
Fluorescence NONE
Inscriptions(s) LG761549220
Comments: HEARTS & ARROWS
As Grown - No indication of post-growth treatment.
This Laboratory Grown Diamond was created by High Pressure High Temperature (HPHT) growth process.
Type II