



**ELECTRONIC COPY**

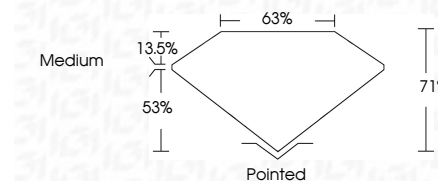
LG761549162  
Report verification at igi.org



January 7, 2026  
IGI Report Number **LG761549162**  
Description **LABORATORY GROWN DIAMOND**  
Shape and Cutting Style **CUT CORNERED  
RECTANGULAR MODIFIED  
BRILLIANT**  
Measurements **7.47 X 4.79 X 3.40 MM**

**GRADING RESULTS**

Carat Weight **1.01 CARAT**  
Color Grade **D**  
Clarity Grade **VS 2**



**ADDITIONAL GRADING INFORMATION**

Polish **VERY GOOD**  
Symmetry **EXCELLENT**  
Fluorescence **NONE**  
Inscription(s) **IGI LG761549162**  
Comments: This Laboratory Grown Diamond was created by Chemical Vapor Deposition (CVD) growth process. Type IIa



January 7, 2026  
IGI Report No LG761549162  
CUT CORNERED RECT. MODIFIED BRILLIANT  
1.01 CARAT  
D  
7.47 X 4.79 X 3.40 MM  
Color Grade  
VS 2  
71%  
63%  
Medium  
Pointed  
VERY GOOD  
EXCELLENT  
NONE  
IGI LG761549162  
Comments: This Laboratory Grown Diamond was created by Chemical Vapor Deposition (CVD) growth process. Type IIa

**LABORATORY GROWN DIAMOND REPORT**

January 7, 2026  
IGI Report Number **LG761549162**  
Description **LABORATORY GROWN DIAMOND**  
Shape and Cutting Style **CUT CORNERED RECTANGULAR  
MODIFIED BRILLIANT**  
Measurements **7.47 X 4.79 X 3.40 MM**

**GRADING RESULTS**

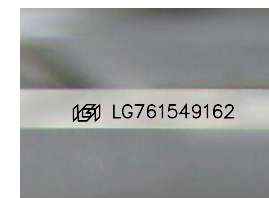
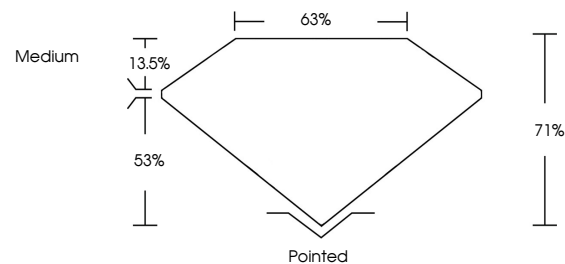
Carat Weight **1.01 CARAT**  
Color Grade **D**  
Clarity Grade **VS 2**

**ADDITIONAL GRADING INFORMATION**

Polish **VERY GOOD**  
Symmetry **EXCELLENT**  
Fluorescence **NONE**  
Inscription(s) **IGI LG761549162**

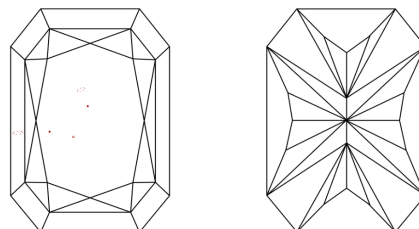
Comments: This Laboratory Grown Diamond was created by Chemical Vapor Deposition (CVD) growth process. Type IIa

**PROPORTIONS**



Sample Image Used

**CLARITY CHARACTERISTICS**



**KEY TO SYMBOLS**

Red symbols indicate internal characteristics.  
Green symbols indicate external characteristics.

**COLOR**

D E F G H I J Faint Very Light Light

**CLARITY**

FL	IF	VS <sup>1-2</sup>	VS <sup>1-2</sup>	SI <sup>1-2</sup>	I <sup>1-3</sup>
Flawless	Internally Flawless	Very Very Slightly Included	Very Slightly Included	Slightly Included	Included

