



LABORATORY GROWN DIAMOND REPORT

December 31, 2025
 IGI Report Number **LG761549057**
 Description **LABORATORY GROWN DIAMOND**
 Shape and Cutting Style **MODIFIED MARQUISE STEP CUT**
 Measurements **9.89 X 5.33 X 2.68 MM**

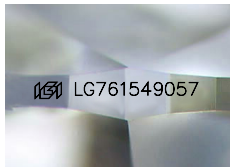
GRADING RESULTS

Carat Weight **0.98 CARAT**
 Color Grade **E**
 Clarity Grade **VVS 2**

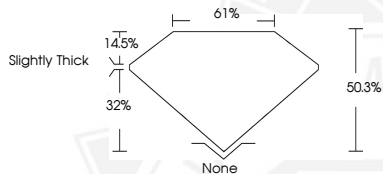
ADDITIONAL GRADING INFORMATION

Polish **EXCELLENT**
 Symmetry **EXCELLENT**
 Fluorescence **NONE**
 Inscription(s) **IGI LG761549057**

Comments: This Laboratory Grown Diamond was created by Chemical Vapor Deposition (CVD) growth process. Type IIa



Sample Image Used



December 31, 2025
 IGI Report Number **LG761549057**
 MODIFIED MARQUISE STEP CUT
 LABORATORY GROWN DIAMOND
 9.89 X 5.33 X 2.68 MM
 Carat Weight **0.98 CARAT**
 Color Grade **E**
 Clarity Grade **VVS 2**
 Polish **EXCELLENT**
 Symmetry **EXCELLENT**
 Fluorescence **NONE**
 Inscription(s) **IGI LG761549057**

Comments: This Laboratory Grown Diamond was created by Chemical Vapor Deposition (CVD) growth process. Type IIa



December 31, 2025
 IGI Report Number **LG761549057**
 MODIFIED MARQUISE STEP CUT
 LABORATORY GROWN DIAMOND
 9.89 X 5.33 X 2.68 MM
 Carat Weight **0.98 CARAT**
 Color Grade **E**
 Clarity Grade **VVS 2**
 Polish **EXCELLENT**
 Symmetry **EXCELLENT**
 Fluorescence **NONE**
 Inscription(s) **IGI LG761549057**

Comments: This Laboratory Grown Diamond was created by Chemical Vapor Deposition (CVD) growth process. Type IIa



THIS DOCUMENT WAS PRODUCED WITH THE FOLLOWING SECURITY MEASURES: SPECIAL DOCUMENT PAPER, INK SCREENS, WATERMARK, BACKGROUND DESIGNS, HOLOGRAM AND OTHER SECURITY FEATURES NOT LISTED AND DO EXCEED DOCUMENT SECURITY INDUSTRY GUIDELINES.