



ELECTRONIC COPY

LG761548847
Report verification at igi.org



December 31, 2025
IGI Report Number **LG761548847**
Description **LABORATORY GROWN DIAMOND**
Shape and Cutting Style **EMERALD CUT**
Measurements **9.90 X 7.08 X 4.80 MM**
GRADING RESULTS
Carat Weight **3.30 CARATS**
Color Grade **F**
Clarity Grade **VVS 2**

December 31, 2025
IGI Report Number **LG761548847**
Description **LABORATORY GROWN DIAMOND**
Shape and Cutting Style **EMERALD CUT**
Measurements **9.90 X 7.08 X 4.80 MM**

GRADING RESULTS

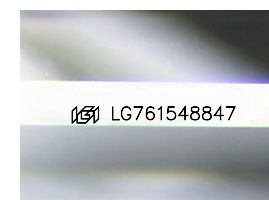
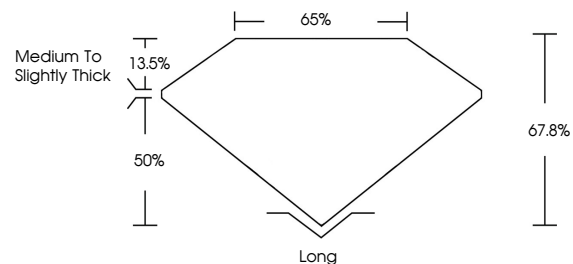
Carat Weight **3.30 CARATS**
Color Grade **F**
Clarity Grade **VVS 2**

ADDITIONAL GRADING INFORMATION

Polish **EXCELLENT**
Symmetry **EXCELLENT**
Fluorescence **NONE**
Inscription(s) **IGI LG761548847**

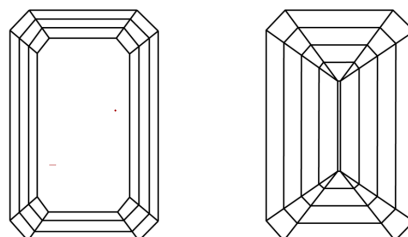
Comments: This Laboratory Grown Diamond was created by Chemical Vapor Deposition (CVD) growth process. Type IIa

PROPORTIONS



Sample Image Used

CLARITY CHARACTERISTICS



KEY TO SYMBOLS

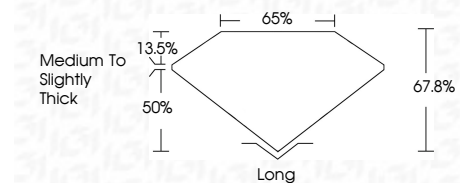
Red symbols indicate internal characteristics.
Green symbols indicate external characteristics.

COLOR

D E F G H I J Faint Very Light Light

CLARITY

FL	IF	VVS ¹⁻²	VS ¹⁻²	SI ¹⁻²	I ¹⁻³
Flawless	Internally Flawless	Very Very Slightly Included	Very Slightly Included	Slightly Included	Included



ADDITIONAL GRADING INFORMATION

Polish **EXCELLENT**
Symmetry **EXCELLENT**
Fluorescence **NONE**
Inscription(s) **IGI LG761548847**
Comments: This Laboratory Grown Diamond was created by Chemical Vapor Deposition (CVD) growth process. Type IIa



December 31, 2025
IGI Report No **LG761548847**
EMERALD CUT
9.90 X 7.08 X 4.80 MM
3.30 CARATS
F
VVS 2
67.8%
50%
Medium to Slightly Thick
Long
EXCELLENT
EXCELLENT
NONE
IGI LG761548847
Comments: This Laboratory Grown Diamond was created by Chemical Vapor Deposition (CVD) growth process. Type IIa