



ELECTRONIC COPY

LG761548346
Report verification at igi.org



December 30, 2025

IGI Report Number **LG761548346**

Description **LABORATORY GROWN DIAMOND**

Shape and Cutting Style **PEAR BRILLIANT**

Measurements **15.24 X 9.33 X 5.95 MM**

GRADING RESULTS

Carat Weight **5.05 CARATS**

Color Grade **E**

Clarity Grade **VVS 2**

December 30, 2025
IGI Report Number **LG761548346**
Description **LABORATORY GROWN DIAMOND**
Shape and Cutting Style **PEAR BRILLIANT**
Measurements **15.24 X 9.33 X 5.95 MM**

GRADING RESULTS

Carat Weight **5.05 CARATS**

Color Grade **E**

Clarity Grade **VVS 2**

ADDITIONAL GRADING INFORMATION

Polish **EXCELLENT**

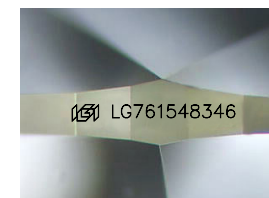
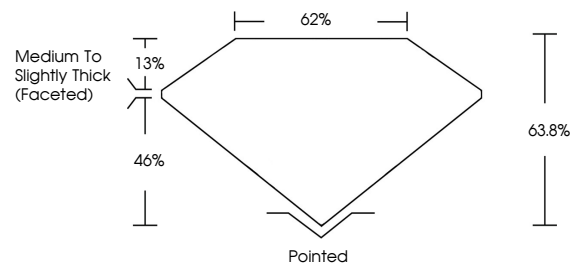
Symmetry **EXCELLENT**

Fluorescence **NONE**

Inscription(s) **IGI LG761548346**

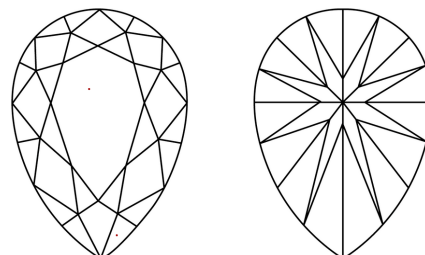
Comments: This Laboratory Grown Diamond was created by Chemical Vapor Deposition (CVD) growth process. Type IIa

PROPORTIONS



Sample Image Used

CLARITY CHARACTERISTICS



KEY TO SYMBOLS

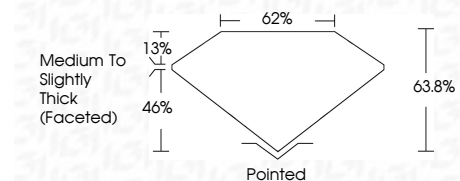
Red symbols indicate internal characteristics.
Green symbols indicate external characteristics.

COLOR

D E F G H I J Faint Very Light Light

CLARITY

FL	IF	VVS ¹⁻²	VS ¹⁻²	SI ¹⁻²	I ¹⁻³
Flawless	Internally Flawless	Very Very Slightly Included	Very Slightly Included	Slightly Included	Included



ADDITIONAL GRADING INFORMATION

Polish **EXCELLENT**

Symmetry **EXCELLENT**

Fluorescence **NONE**

Inscription(s) **IGI LG761548346**

Comments: This Laboratory Grown Diamond was created by Chemical Vapor Deposition (CVD) growth process. Type IIa



December 30, 2025
IGI Report No LG761548346
PEAR BRILLIANT

5.05 CARATS
E

15.24 X 9.33 X 5.95 MM

Carat Weight
Color Grade
Clarity Grade
Table
Depth
Girdle
Medium to Slightly Thick (Faceted)

5.05
E
VVS 2
63.8%
62%

Pointed
EXCELLENT
EXCELLENT
NONE
IGI LG761548346

Culet
Polish
Symmetry
Fluorescence
Inscription(s)

Comments: This Laboratory Grown Diamond was created by Chemical Vapor Deposition (CVD) growth process. Type IIa