



LABORATORY GROWN DIAMOND REPORT

January 6, 2026
 IGI Report Number **LG761547410**
 Description **LABORATORY GROWN DIAMOND**
 Shape and Cutting Style **FLOWER MODIFIED BRILLIANT**
 Measurements **4.94 X 4.89 X 3.60 MM**

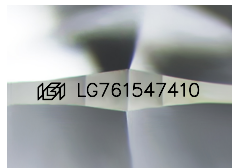
GRADING RESULTS

Carat Weight **0.69 CARAT**
 Color Grade **E**
 Clarity Grade **VS 1**

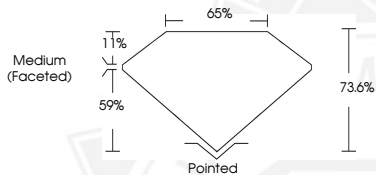
ADDITIONAL GRADING INFORMATION

Polish **VERY GOOD**
 Symmetry **VERY GOOD**
 Fluorescence **NONE**
 Inscription(s) **IGI LG761547410**

Comments: This Laboratory Grown Diamond was created by
 Chemical Vapor Deposition (CVD) growth process.
 Type IIa



Sample Image Used



January 6, 2026

IGI Report Number LG761547410
FLOWER MODIFIED BRILLIANT
LABORATORY GROWN DIAMOND
4.94 X 4.89 X 3.60 MM

Carat Weight **0.69 CARAT**
 Color Grade **E**
 Clarity Grade **VS 1**
 Polish **VERY GOOD**
 Symmetry **VERY GOOD**
 Fluorescence **NONE**
 Inscription(s) **IGI LG761547410**

Comments: This Laboratory Grown
 Diamond was created by
 Chemical Vapor Deposition (CVD)
 growth process. Type IIa



January 6, 2026

IGI Report Number LG761547410
FLOWER MODIFIED BRILLIANT
LABORATORY GROWN DIAMOND
4.94 X 4.89 X 3.60 MM

Carat Weight **0.69 CARAT**
 Color Grade **E**
 Clarity Grade **VS 1**
 Polish **VERY GOOD**
 Symmetry **VERY GOOD**
 Fluorescence **NONE**
 Inscription(s) **IGI LG761547410**

Comments: This Laboratory Grown
 Diamond was created by
 Chemical Vapor Deposition (CVD)
 growth process. Type IIa



THIS DOCUMENT WAS PRODUCED WITH THE FOLLOWING SECURITY MEASURES: SPECIAL DOCUMENT PAPER, INK SCREENS, WATERMARK, BACKGROUND DESIGNS, HOLOGRAM AND OTHER SECURITY FEATURES NOT LISTED AND DO EXCEED DOCUMENT SECURITY INDUSTRY GUIDELINES.