

**ELECTRONIC COPY**

## LABORATORY GROWN DIAMOND REPORT

January 28, 2026	
IGI Report Number	LG761545891
Description	LABORATORY GROWN DIAMOND
Shape and Cutting Style	ROUND BRILLIANT
Measurements	11.28 - 11.31 X 6.97 MM

## GRADING RESULTS

Carat Weight	5.52 CARATS
Color Grade	E
Clarity Grade	VS 1
Cut Grade	IDEAL

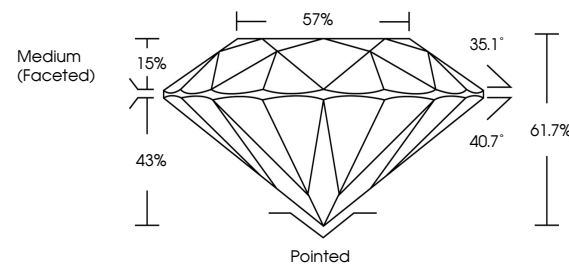
### ADDITIONAL GRADING INFORMATION

Polish	EXCELLENT
Symmetry	EXCELLENT
Fluorescence	NONE
Inscription(s)	 LG761545891

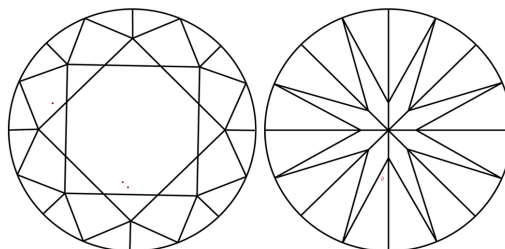
Comments: This Laboratory Grown Diamond was created by Chemical Vapor Deposition (CVD) growth process.  
Type IIa

LG761545891  
Report verification at [igi.org](https://igi.org)

## PROPORTIONS

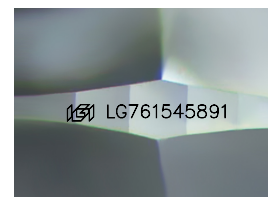


## CLARITY CHARACTERISTICS



## KEY TO SYMBOLS

Red symbols indicate internal characteristics.  
Green symbols indicate external characteristics.



Sample Image Used

**COLOR**

D E F G H I J Faint Very Light Light

## CLARITY

FL	IF	VVS <sup>1-2</sup>	VS <sup>1-2</sup>	SI <sup>1-2</sup>	I <sup>1-3</sup>
Flawless	Internally Flawless	Very Very Slightly Included	Very Slightly Included	Slightly Included	Included

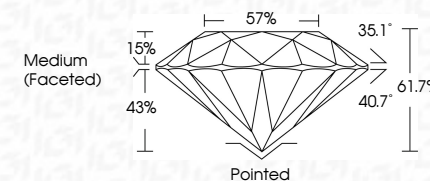
## LABORATORY GROWN DIAMOND REPORT



January 28, 2026	
IGI Report Number	LG761545891
Description	LABORATORY GROWN DIAMOND
Shape and Cutting Style	ROUND BRILLIANT
Measurements	11.28 - 11.31 X 6.97 MM

## GRADING RESULTS

Carat Weight	5.52 CARATS
Color Grade	E
Clarity Grade	VS 1
Cut Grade	IDEAL



### ADDITIONAL GRADING INFORMATION

Polish	EXCELLENT
Symmetry	EXCELLENT
Fluorescence	NONE
Inscription(s)	<del>(G)</del> LG761545891
<p>Comments: This Laboratory Grown Diamond was created by Chemical Vapor Deposition (CVD) growth process.</p> <p>Type IIa</p>	



© IGI 2020, International Gemological Institute

FD - 10 20

January 28, 2026  
GI Report No LG761545891  
POIND BRILLIANT

ROUND BRILLIANT	11.28 - 11.31 X 6.97 MM	Carat Weight	5.82 CARATS
		Color Grade	E
		Clarity Grade	VS 1
		Cut Grade	IDEAL
		Depth	61.7%
		Table	57%
		Girdle	Medium (faceted)
		Culet	Pointed
		Polish	EXCELLENT
		Symmetry	EXCELLENT
	Fluorescence	NONE	

**Comments:**  
This Laboratory Grown Diamond was  
created by Chemical Vapor Deposition  
(CVD) growth process.