



ELECTRONIC COPY

LG761545493
Report verification at igi.org



February 2, 2026

IGI Report Number **LG761545493**

Description **LABORATORY GROWN DIAMOND**

Shape and Cutting Style **ROUND BRILLIANT**

Measurements **10.95 - 11.05 X 6.58 MM**

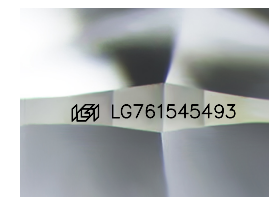
GRADING RESULTS

Carat Weight **5.00 CARATS**

Color Grade **E**

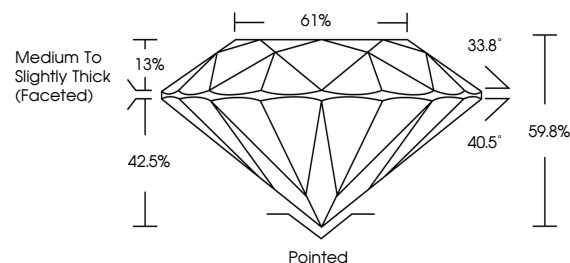
Clarity Grade **VVS 2**

Cut Grade **EXCELLENT**

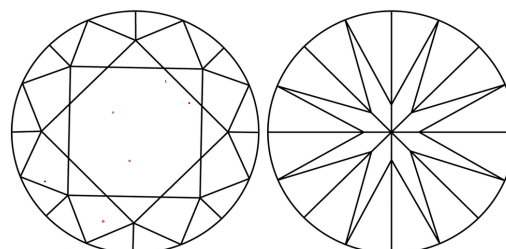


Sample Image Used

PROPORTIONS



CLARITY CHARACTERISTICS



KEY TO SYMBOLS

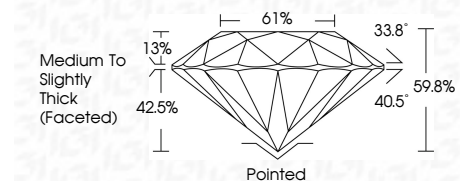
Red symbols indicate internal characteristics.
Green symbols indicate external characteristics.

COLOR

D E F G H I J Faint Very Light Light

CLARITY

FL	IF	VVS ¹⁻²	VS ¹⁻²	SI ¹⁻²	I ¹⁻³
Flawless	Internally Flawless	Very Very Slightly Included	Very Slightly Included	Slightly Included	Included



ADDITIONAL GRADING INFORMATION

Polish **EXCELLENT**

Symmetry **VERY GOOD**

Fluorescence **NONE**

Inscription(s) **IGI LG761545493**

Comments: This Laboratory Grown Diamond was created by Chemical Vapor Deposition (CVD) growth process. Type IIa



IGI



February 2, 2026
IGI Report No LG761545493
ROUND BRILLIANT

5.00 CARATS
E

Carat Weight
Color Grade
Clarity Grade
Depth
Table
Girdle

EXCELLENT
EXCELLENT
EXCELLENT
61%
Medium To Slightly Thick (Faceted)

Pointed
EXCELLENT
VERY GOOD
NONE
NONE

Culet
Polish
Symmetry
Fluorescence
Inscription(s)

IGI LG761545493

Comments: This Laboratory Grown Diamond was created by Chemical Vapor Deposition (CVD) growth process. Type IIa