



ELECTRONIC COPY

LG761544566 Report verification at igi.org



January 28, 2026 IGI Report Number LG761544566 Description LABORATORY GROWN DIAMOND Shape and Cutting Style CUSHION MODIFIED BRILLIANT Measurements 10.57 X 7.07 X 4.61 MM GRADING RESULTS Carat Weight 3.01 CARATS Color Grade FANCY VIVID GREENISH BLUE Clarity Grade VS 1

January 28, 2026 IGI Report Number LG761544566 Description LABORATORY GROWN DIAMOND Shape and Cutting Style CUSHION MODIFIED BRILLIANT Measurements 10.57 X 7.07 X 4.61 MM

GRADING RESULTS

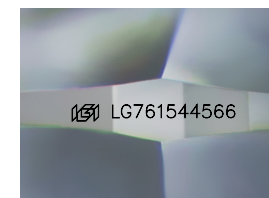
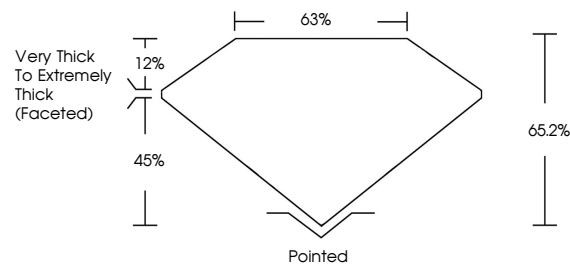
Carat Weight 3.01 CARATS Color Grade FANCY VIVID GREENISH BLUE Clarity Grade VS 1

ADDITIONAL GRADING INFORMATION

Polish EXCELLENT Symmetry EXCELLENT Fluorescence NONE Inscription(s) IGI LG761544566

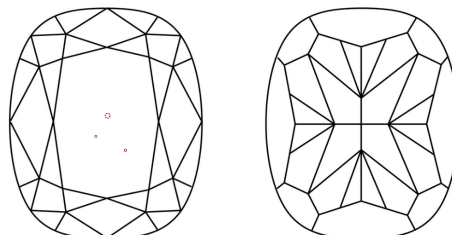
Comments: This Laboratory Grown Diamond was created by Chemical Vapor Deposition (CVD) growth process. Indications of post-growth treatment.

PROPORTIONS



Sample Image Used

CLARITY CHARACTERISTICS



KEY TO SYMBOLS

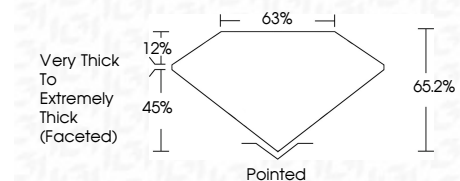
Red symbols indicate internal characteristics. Green symbols indicate external characteristics.

COLOR

D E F G H I J Faint Very Light Light

CLARITY

FL IF VS 1-2 VS 2-3 SI 1-2 I 1-3 Flawless Internally Flawless Very Very Slightly Included Very Slightly Included Slightly Included Included



ADDITIONAL GRADING INFORMATION

Polish EXCELLENT Symmetry EXCELLENT Fluorescence NONE Inscription(s) IGI LG761544566 Comments: This Laboratory Grown Diamond was created by Chemical Vapor Deposition (CVD) growth process. Indications of post-growth treatment.



January 28, 2026 IGI Report No LG761544566 CUSHION MODIFIED BRILLIANT 3.01 CARATS Carat Weight 3.01 CARATS Color Grade FANCY VIVID GREENISH BLUE VS 1 Clarity Grade VS 1 Depth 65.2% Table 65% Girdle Very Thick to Extremely Thick (Faceted) Pointed Culet EXCELLENT POLISH EXCELLENT SYMMETRY EXCELLENT FLUORESCENCE NONE INSRIPTION(S) IGI LG761544566 Comments: This Laboratory Grown Diamond was created by Chemical Vapor Deposition (CVD) growth process. Indications of post-growth treatment.