



ELECTRONIC COPY

LG761543934
Report verification at igi.org



January 23, 2026
IGI Report Number **LG761543934**
Description **LABORATORY GROWN DIAMOND**
Shape and Cutting Style **CUSHION MODIFIED BRILLIANT**
Measurements **11.78 X 8.31 X 5.76 MM**
GRADING RESULTS
Carat Weight **5.08 CARATS**
Color Grade **FANCY VIVID BLUE**
Clarity Grade **VS 2**

LABORATORY GROWN DIAMOND REPORT

January 23, 2026
IGI Report Number **LG761543934**
Description **LABORATORY GROWN DIAMOND**
Shape and Cutting Style **CUSHION MODIFIED BRILLIANT**
Measurements **11.78 X 8.31 X 5.76 MM**

GRADING RESULTS

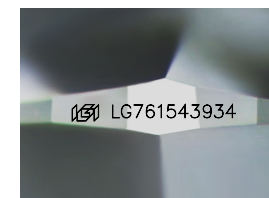
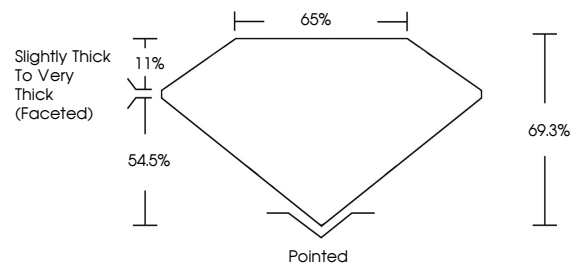
Carat Weight **5.08 CARATS**
Color Grade **FANCY VIVID BLUE**
Clarity Grade **VS 2**

ADDITIONAL GRADING INFORMATION

Polish **EXCELLENT**
Symmetry **EXCELLENT**
Fluorescence **NONE**
Inscription(s) **IGI LG761543934**

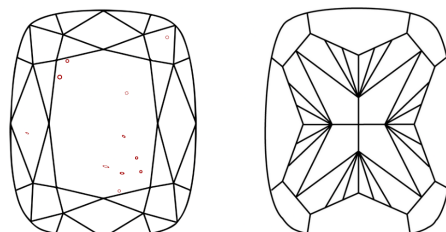
Comments: This Laboratory Grown Diamond was created by Chemical Vapor Deposition (CVD) growth process.
Indications of post-growth treatment.

PROPORTIONS



Sample Image Used

CLARITY CHARACTERISTICS



KEY TO SYMBOLS

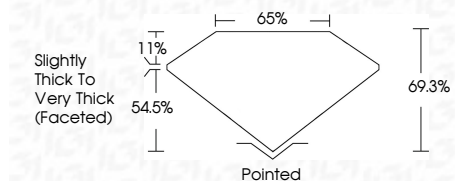
Red symbols indicate internal characteristics.
Green symbols indicate external characteristics.

COLOR

D E F G H I J Faint Very Light Light

CLARITY

FL	IF	VS ¹⁻²	VS ¹⁻²	SI ¹⁻²	I ¹⁻³
Flawless	Internally Flawless	Very Very Slightly Included	Very Slightly Included	Slightly Included	Included



ADDITIONAL GRADING INFORMATION

Polish **EXCELLENT**
Symmetry **EXCELLENT**
Fluorescence **NONE**
Inscription(s) **IGI LG761543934**
Comments: This Laboratory Grown Diamond was created by Chemical Vapor Deposition (CVD) growth process.
Indications of post-growth treatment.



January 23, 2026
IGI Report No LG761543934
CUSHION MODIFIED BRILLIANT
11.78 X 8.31 X 5.76 MM
5.08 CARATS
FANCY VIVID BLUE
VS 2
69.3%
54.5%
Slightly Thick To Very Thick (Faceted)
Pointed
EXCELLENT
EXCELLENT
NONE
IGI LG761543934
Comments: This Laboratory Grown Diamond was created by Chemical Vapor Deposition (CVD) growth process.
Indications of post-growth treatment.