



ELECTRONIC COPY

LG761543352
Report verification at igi.org



January 23, 2026
IGI Report Number **LG761543352**
Description **LABORATORY GROWN DIAMOND**
Shape and Cutting Style **CUSHION MODIFIED BRILLIANT**
Measurements **12.29 X 10.25 X 6.41 MM**
GRADING RESULTS
Carat Weight **7.48 CARATS**
Color Grade **FANCY VIVID YELLOW**
Clarity Grade **SI 1**

LABORATORY GROWN DIAMOND REPORT

January 23, 2026
IGI Report Number **LG761543352**
Description **LABORATORY GROWN DIAMOND**
Shape and Cutting Style **CUSHION MODIFIED BRILLIANT**
Measurements **12.29 X 10.25 X 6.41 MM**

GRADING RESULTS

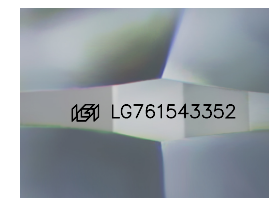
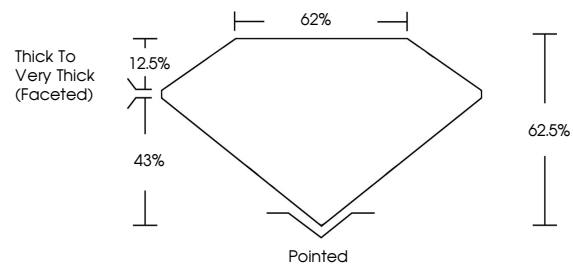
Carat Weight **7.48 CARATS**
Color Grade **FANCY VIVID YELLOW**
Clarity Grade **SI 1**

ADDITIONAL GRADING INFORMATION

Polish **EXCELLENT**
Symmetry **EXCELLENT**
Fluorescence **NONE**
Inscription(s) **IGI LG761543352**

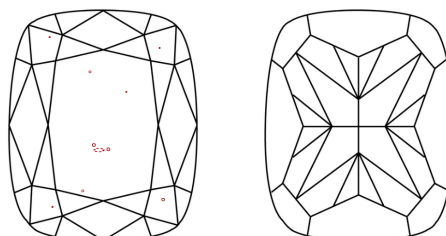
Comments: This Laboratory Grown Diamond was created by Chemical Vapor Deposition (CVD) growth process.

PROPORTIONS



Sample Image Used

CLARITY CHARACTERISTICS



KEY TO SYMBOLS

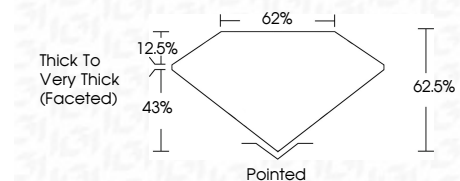
Red symbols indicate internal characteristics.
Green symbols indicate external characteristics.

COLOR

D E F G H I J Faint Very Light Light

CLARITY

FL	IF	VS ¹⁻²	VS ¹⁻²	SI ¹⁻²	I ¹⁻³
Flawless	Internally Flawless	Very Very Slightly Included	Very Slightly Included	Slightly Included	Included



ADDITIONAL GRADING INFORMATION

Polish **EXCELLENT**
Symmetry **EXCELLENT**
Fluorescence **NONE**
Inscription(s) **IGI LG761543352**
Comments: This Laboratory Grown Diamond was created by Chemical Vapor Deposition (CVD) growth process.



IGI



January 23, 2026
IGI Report No LG761543352
CUSHION MODIFIED BRILLIANT
12.29 X 10.25 X 6.41 MM
7.48 CARATS
FANCY VIVID YELLOW
SI 1
62.5%
43%
62%
Thick to Very Thick (Faceted)
Pointed
EXCELLENT
EXCELLENT
NONE
IGI LG761543352
Comments: This Laboratory Grown Diamond was created by Chemical Vapor Deposition (CVD) growth process.