



**ELECTRONIC COPY**

LG761540559  
Report verification at [igi.org](http://igi.org)



January 21, 2026

IGI Report Number **LG761540559**

Description **LABORATORY GROWN DIAMOND**

Shape and Cutting Style **CUT CORNERED  
RECTANGULAR MODIFIED  
BRILLIANT**

Measurements **14.80 X 9.66 X 6.60 MM**

**GRADING RESULTS**

Carat Weight **9.09 CARATS**

Color Grade **FANCY VIVID YELLOW**

Clarity Grade **VVS 2**

**LABORATORY GROWN DIAMOND REPORT**

January 21, 2026

IGI Report Number **LG761540559**

Description **LABORATORY GROWN DIAMOND**

Shape and Cutting Style **CUT CORNERED RECTANGULAR  
MODIFIED BRILLIANT**

Measurements **14.80 X 9.66 X 6.60 MM**

**GRADING RESULTS**

Carat Weight **9.09 CARATS**

Color Grade **FANCY VIVID YELLOW**

Clarity Grade **VVS 2**

**ADDITIONAL GRADING INFORMATION**

Polish **EXCELLENT**

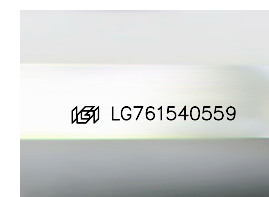
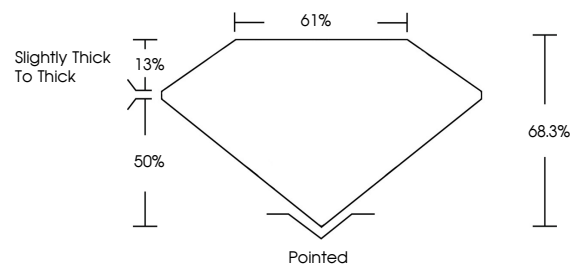
Symmetry **EXCELLENT**

Fluorescence **NONE**

Inscription(s) **IGI LG761540559**

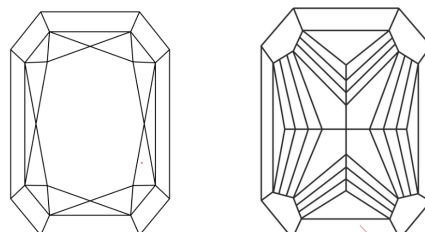
Comments: This Laboratory Grown Diamond was created by Chemical Vapor Deposition (CVD) growth process.

**PROPORTIONS**



Sample Image Used

**CLARITY CHARACTERISTICS**



**KEY TO SYMBOLS**

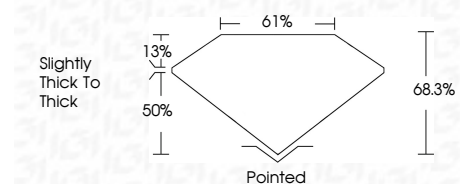
Red symbols indicate internal characteristics.  
Green symbols indicate external characteristics.

**COLOR**

D E F G H I J Faint Very Light Light

**CLARITY**

FL	IF	VVS <sup>1-2</sup>	VS <sup>1-2</sup>	SI <sup>1-2</sup>	I <sup>1-3</sup>
Flawless	Internally Flawless	Very Very Slightly Included	Very Slightly Included	Slightly Included	Included



**ADDITIONAL GRADING INFORMATION**

Polish **EXCELLENT**

Symmetry **EXCELLENT**

Fluorescence **NONE**

Inscription(s) **IGI LG761540559**

Comments: This Laboratory Grown Diamond was created by Chemical Vapor Deposition (CVD) growth process.



**IGI**



January 21, 2026  
IGI Report No LG761540559  
CUT CORNERED RECT. MODIFIED BRILLIANT  
14.80 X 9.66 X 6.60 MM  
9.09 CARATS  
FANCY VIVID YELLOW  
VVS 2  
68.3%  
61%  
Slightly thick to thick  
Pointed  
EXCELLENT  
EXCELLENT  
NONE  
IGI LG761540559  
Comments: This Laboratory Grown Diamond was created by Chemical Vapor Deposition (CVD) growth process.