



ELECTRONIC COPY

LG761540239 Report verification at igi.org



January 21, 2026 IGI Report Number LG761540239 Description LABORATORY GROWN DIAMOND Shape and Cutting Style EMERALD CUT Measurements 9.77 X 6.58 X 4.68 MM

GRADING RESULTS

Carat Weight 3.00 CARATS Color Grade H Clarity Grade SI 1

January 21, 2026 IGI Report Number LG761540239 Description LABORATORY GROWN DIAMOND Shape and Cutting Style EMERALD CUT Measurements 9.77 X 6.58 X 4.68 MM

GRADING RESULTS

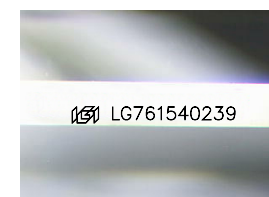
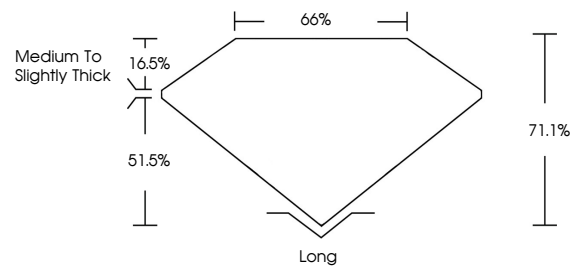
Carat Weight 3.00 CARATS Color Grade H Clarity Grade SI 1

ADDITIONAL GRADING INFORMATION

Polish EXCELLENT Symmetry VERY GOOD Fluorescence NONE Inscription(s) LG761540239

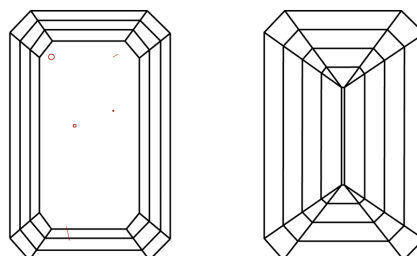
Comments: This Laboratory Grown Diamond was created by Chemical Vapor Deposition (CVD) growth process. Type IIa

PROPORTIONS



Sample Image Used

CLARITY CHARACTERISTICS



KEY TO SYMBOLS

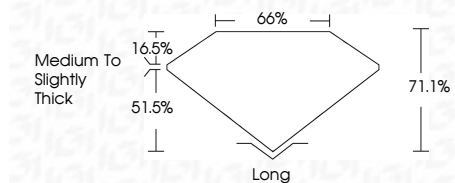
Red symbols indicate internal characteristics. Green symbols indicate external characteristics.

COLOR

D E F G H I J Faint Very Light Light

CLARITY

FL IF VS 1-2 VS 1-2 SI 1-2 I 1-3 Flawless Internally Flawless Very Very Slightly Included Very Slightly Included Slightly Included Included



ADDITIONAL GRADING INFORMATION

Polish EXCELLENT Symmetry VERY GOOD Fluorescence NONE Inscription(s) LG761540239 Comments: This Laboratory Grown Diamond was created by Chemical Vapor Deposition (CVD) growth process. Type IIa



January 21, 2026 IGI Report No LG761540239 EMERALD CUT 3.00 CARATS H 71.1% 66% Medium to Slightly Thick Long EXCELLENT VERY GOOD NONE NONE LG761540239 Comments: This Laboratory Grown Diamond was created by Chemical Vapor Deposition (CVD) growth process. Type IIa