



**ELECTRONIC COPY**

LG761539146  
Report verification at igi.org



January 20, 2026  
IGI Report Number **LG761539146**  
Description **LABORATORY GROWN DIAMOND**  
Shape and Cutting Style **CUSHION MODIFIED BRILLIANT**  
Measurements **9.65 X 8.05 X 5.58 MM**  
**GRADING RESULTS**  
Carat Weight **4.05 CARATS**  
Color Grade **FANCY VIVID YELLOW**  
Clarity Grade **VS 1**

January 20, 2026  
IGI Report Number **LG761539146**  
Description **LABORATORY GROWN DIAMOND**  
Shape and Cutting Style **CUSHION MODIFIED BRILLIANT**  
Measurements **9.65 X 8.05 X 5.58 MM**

**GRADING RESULTS**

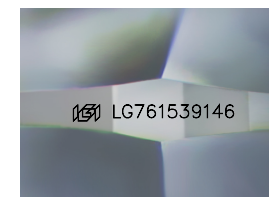
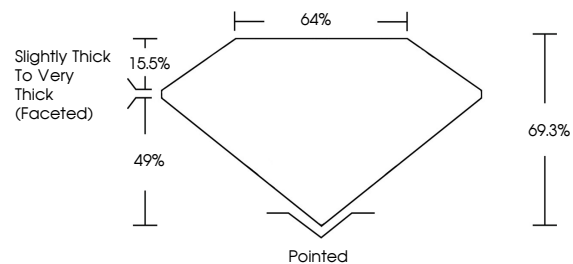
Carat Weight **4.05 CARATS**  
Color Grade **FANCY VIVID YELLOW**  
Clarity Grade **VS 1**

**ADDITIONAL GRADING INFORMATION**

Polish **EXCELLENT**  
Symmetry **EXCELLENT**  
Fluorescence **NONE**  
Inscription(s) **IGI LG761539146**

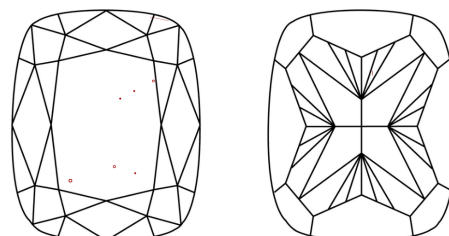
Comments: This Laboratory Grown Diamond was created by Chemical Vapor Deposition (CVD) growth process.

**PROPORTIONS**



Sample Image Used

**CLARITY CHARACTERISTICS**



**KEY TO SYMBOLS**

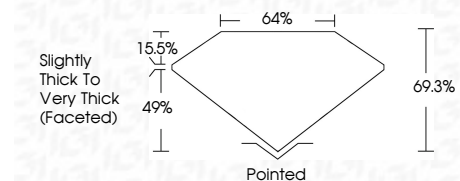
Red symbols indicate internal characteristics.  
Green symbols indicate external characteristics.

**COLOR**

D E F G H I J Faint Very Light Light

**CLARITY**

FL	IF	VS <sup>1-2</sup>	VS <sup>1-2</sup>	SI <sup>1-2</sup>	I <sup>1-3</sup>
Flawless	Internally Flawless	Very Very Slightly Included	Very Slightly Included	Slightly Included	Included



**ADDITIONAL GRADING INFORMATION**

Polish **EXCELLENT**  
Symmetry **EXCELLENT**  
Fluorescence **NONE**  
Inscription(s) **IGI LG761539146**  
Comments: This Laboratory Grown Diamond was created by Chemical Vapor Deposition (CVD) growth process.



January 20, 2026  
IGI Report No LG761539146  
CUSHION MODIFIED BRILLIANT  
4.05 CARATS  
Carat Weight  
Color Grade FANCY VIVID YELLOW  
Clarity Grade VS 1  
Depth 69.3%  
Table 64%  
Girdle Slightly Thick To Very Thick (Faceted)  
Culet Pointed  
Polish EXCELLENT  
Symmetry EXCELLENT  
Fluorescence NONE  
Inscription(s) IGI LG761539146  
Comments: This Laboratory Grown Diamond was created by Chemical Vapor Deposition (CVD) growth process.