



ELECTRONIC COPY

LG761539117
Report verification at igi.org



January 20, 2026

IGI Report Number **LG761539117**

Description **LABORATORY GROWN DIAMOND**

Shape and Cutting Style **CUT CORNERED
RECTANGULAR MODIFIED
BRILLIANT**

Measurements **11.69 X 8.20 X 5.86 MM**

GRADING RESULTS

Carat Weight **5.59 CARATS**

Color Grade **FANCY VIVID PINK**

Clarity Grade **VS 2**

LABORATORY GROWN DIAMOND REPORT

January 20, 2026

IGI Report Number **LG761539117**

Description **LABORATORY GROWN DIAMOND**

Shape and Cutting Style **CUT CORNERED RECTANGULAR
MODIFIED BRILLIANT**

Measurements **11.69 X 8.20 X 5.86 MM**

GRADING RESULTS

Carat Weight **5.59 CARATS**

Color Grade **FANCY VIVID PINK**

Clarity Grade **VS 2**

ADDITIONAL GRADING INFORMATION

Polish **EXCELLENT**

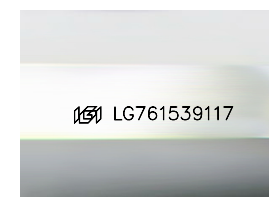
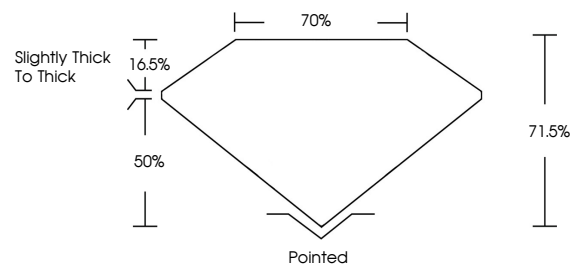
Symmetry **EXCELLENT**

Fluorescence **STRONG**

Inscription(s) **IGI LG761539117**

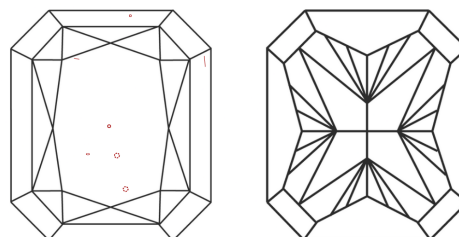
Comments: This Laboratory Grown Diamond was created by Chemical Vapor Deposition (CVD) growth process. Indications of post-growth treatment.

PROPORTIONS



Sample Image Used

CLARITY CHARACTERISTICS



KEY TO SYMBOLS

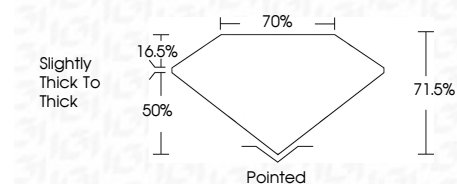
Red symbols indicate internal characteristics.
Green symbols indicate external characteristics.

COLOR

D E F G H I J Faint Very Light Light

CLARITY

FL	IF	VS ¹⁻²	VS ¹⁻²	SI ¹⁻²	I ¹⁻³
Flawless	Internally Flawless	Very Very Slightly Included	Very Slightly Included	Slightly Included	Included



ADDITIONAL GRADING INFORMATION

Polish **EXCELLENT**

Symmetry **EXCELLENT**

Fluorescence **STRONG**

Inscription(s) **IGI LG761539117**

Comments: This Laboratory Grown Diamond was created by Chemical Vapor Deposition (CVD) growth process. Indications of post-growth treatment.



January 20, 2026	IGI Report No LG761539117	CUT CORNERED RECT. MODIFIED BRILLIANT	11.69 X 8.20 X 5.86 MM	5.59 CARATS	FANCY VIVID PINK	VS 2	71.05%	70%	Slightly thick to thick	Pointed	EXCELLENT	EXCELLENT	STRONG	IGI LG761539117
				Carat Weight	Color Grade	Clarity Grade	Table	Depth	Graile	Culet	Polish	Symmetry	Fluorescence	Inscription(s)

Comments: This Laboratory Grown Diamond was created by Chemical Vapor Deposition (CVD) growth process. Indications of post-growth treatment.