



ELECTRONIC COPY

LABORATORY GROWN DIAMOND REPORT

LG761537772
Report verification at igi.org

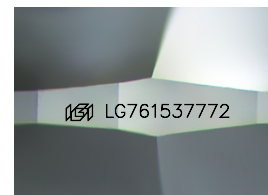
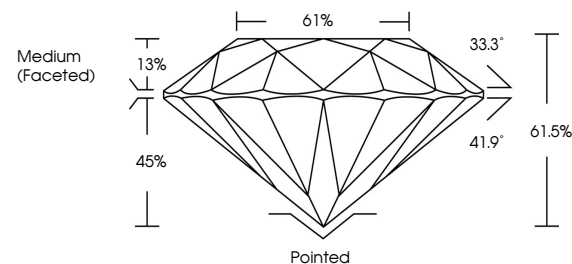
January 5, 2026	
IGI Report Number	LG761537772
Description	LABORATORY GROWN DIAMOND
Shape and Cutting Style	ROUND BRILLIANT
Measurements	7.44 - 7.48 X 4.58 MM
GRADING RESULTS	
Carat Weight	1.55 CARAT
Color Grade	D
Clarity Grade	VVS 2
Cut Grade	VERY GOOD

ADDITIONAL GRADING INFORMATION

Polish	EXCELLENT
Symmetry	EXCELLENT
Fluorescence	NONE
Inscription(s)	151 LG761537772

Comments: This Laboratory Grown Diamond was created by Chemical Vapor Deposition (CVD) growth process.
Type IIa

PROPORTIONS



Sample Image Used

COLOR

D E F G H I J Faint Very Light Light

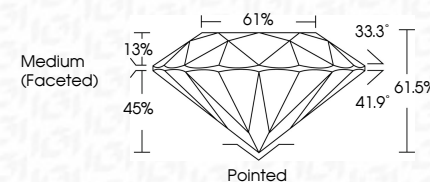
CLARITY

FL	IF	VVS ¹⁻²	VS ¹⁻²	SI ¹⁻²	I ¹⁻³
Flawless	Internally Flawless	Very Very Slightly Included	Very Slightly Included	Slightly Included	Included

LABORATORY GROWN DIAMOND REPORT



January 5, 2026	
IGI Report Number	LG761537772
Description	LABORATORY GROWN DIAMOND
Shape and Cutting Style	ROUND BRILLIANT
Measurements	7.44 - 7.48 X 4.58 MM
GRADING RESULTS	
Carat Weight	1.55 CARAT
Color Grade	D
Clarity Grade	VVS 2
Cut Grade	VERY GOOD



ADDITIONAL GRADING INFORMATION

Polish	EXCELLENT
Symmetry	EXCELLENT
Fluorescence	NONE
Inscription(s)	 LG761537772
<p>Comments: This Laboratory Grown Diamond was created by Chemical Vapor Deposition (CVD) growth process.</p> <p>Type IIa</p>	



© IGI 2020, International Gemological Institute

FD - 10 20



THIS DOCUMENT WAS PRODUCED WITH THE FOLLOWING SECURITY MEASURES: SPECIAL DOCUMENT PAPER, INK SCREENS, WATERMARK, BACKGROUND DESIGNS, HOLOGRAM, AND OTHER SECURITY FEATURES NOT LISTED AND DO EXCEED DOCUMENT SECURITY INDUSTRY GUIDELINES

www.igi.org

January 5, 2026
GI Report No LG761537772

GI Report No LG76
DOYIND BRILLIANT

7.44 - 7.48 X 4.58 MM

7.44 - 7.48 X 4.58 MM
1.55 CARAT

Catal Weight II	1.50 Catal
Color Grade	D

Clarity Grade	WS 2
FL	
IF	
VVS	
VS	
SI	
I	
P	

Very Good

Depth	61.5%	61%
Table		

Circle

Culet	Pointed
Polish	EXCELLENT

symmetry

Fluorescence	NONE
Fluorescence	NONE

Description (\$) 1991 LG/6163/112

Comments:
This Laboratory Grown Diamond was

created by Chemical Vapor Deposition (CVD) growth process

Type IIIa